

\$344,998 - 136 1025 Secord Promenade, Edmonton

MLS® #E4424787

\$344,998

2 Bedroom, 2.00 Bathroom, 1,075 sqft

Condo / Townhouse on 0.00 Acres

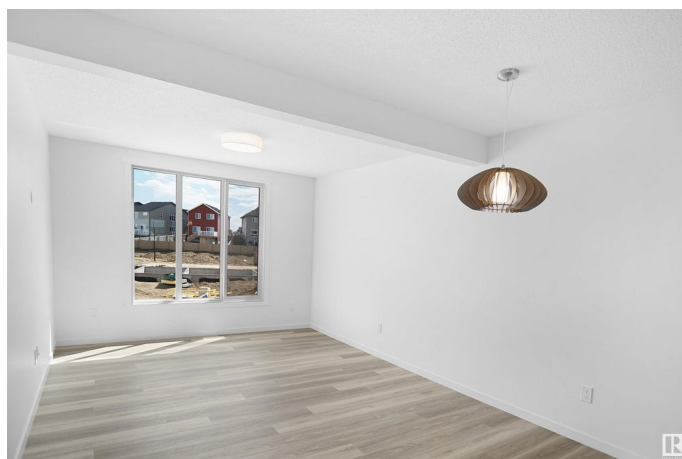
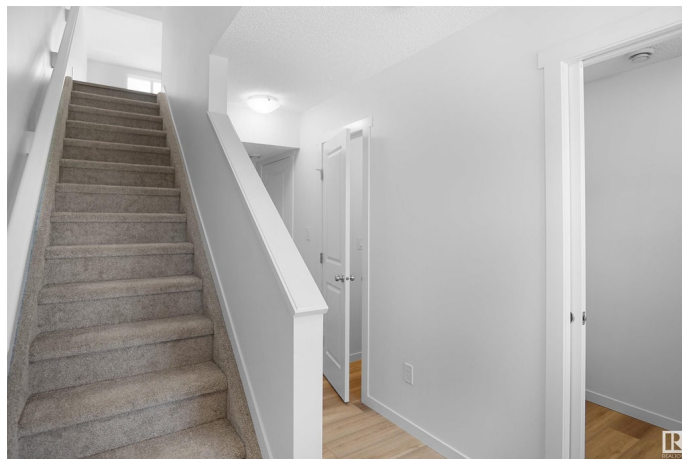
Secord, Edmonton, AB

This is StreetSide Developments the all new "Iris" model. This innovative home design with the ground level featuring a single oversized attached garage that leads to the front entrance and a main floor den or bedroom. It features a large kitchen. The cabinets are modern and there is a full back splash & quartz counter tops. It is open to the living room and the living room features lots of windows that makes it super bright. The deck has a vinyl surface & glass with aluminum railing that is off the kitchen. This home features 2 Primary bedrooms with 2 full bathrooms. The flooring is luxury vinyl plank & carpet. Maintenance fees are \$60/month. It is professionally landscaped. Visitor parking on site.***Home is under construction and the photos are of a previously built unit same layout but the colors and finishing's may vary, to be completed by August 2025 ***

Built in 2025

Essential Information

MLS® #	E4424787
Price	\$344,998
Bedrooms	2
Bathrooms	2.00
Full Baths	2
Square Footage	1,075



Acres	0.00
Year Built	2025
Type	Condo / Townhouse
Sub-Type	Townhouse
Style	2 Storey
Status	Active

Community Information

Address	136 1025 Secord Promenade
Area	Edmonton
Subdivision	Secord
City	Edmonton
County	ALBERTA
Province	AB
Postal Code	T5T 7V4

Amenities

Amenities	See Remarks
Parking	Single Garage Attached

Interior

Interior Features	ensuite bathroom
Appliances	See Remarks
Heating	Forced Air-1, Natural Gas
Stories	3
Has Basement	Yes
Basement	None, No Basement

Exterior

Exterior	Wood, Vinyl
Exterior Features	Fenced, Golf Nearby, Landscaped, Park/Reserve, Playground Nearby, Public Transportation, Schools, Shopping Nearby, See Remarks
Roof	Asphalt Shingles
Construction	Wood, Vinyl
Foundation	Concrete Perimeter

Additional Information

Date Listed	March 7th, 2025
Days on Market	55

Zoning	Zone 58
Condo Fee	\$60

DATA IS DEEMED RELIABLE BUT IS NOT GUARANTEED ACCURATE BY THE REALTORS® ASSOCIATION OF EDMONTON. COPYRIGHT 2025 BY THE REALTORS® ASSOCIATION OF EDMONTON. ALL RIGHTS RESERVED. Trademarks are owned or controlled by the Canadian Real Estate Association (CREA) and identify real estate professionals who are members of CREA (REALTOR®, REALTORS®) and/or the quality of services they provide (MLS®, Multiple Listing Service®)

Listing information last updated on May 1st, 2025 at 4:32pm MDT