

\$725,000 - 38 Kingsbury Crescent, St. Albert

MLS® #E4429428

\$725,000

7 Bedroom, 3.00 Bathroom, 2,702 sqft

Single Family on 0.00 Acres

Kingswood, St. Albert, AB

Welcome to this property featuring more than 2700 sqft with a walkout basement and a large triple attached garage in the esteemed Kingswood neighbourhood of St. Albert. This 1 1/2 story home features 7 bedrooms and 3 complete baths. The property is in original condition and is sold on as is, where is basis.

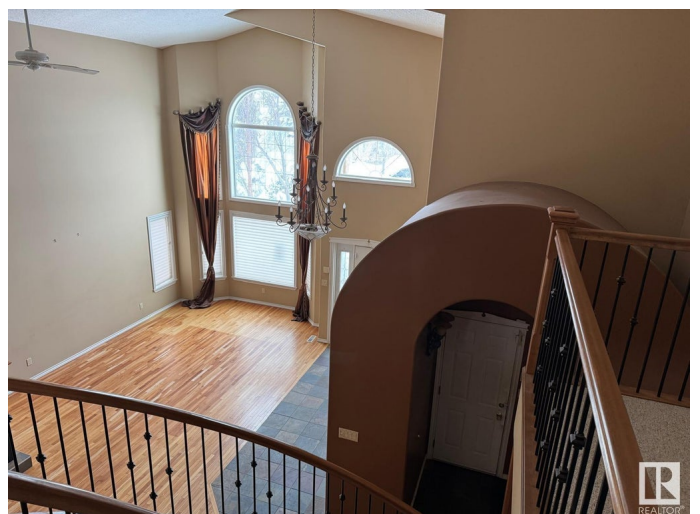
Built in 1999

Essential Information

MLS® #	E4429428
Price	\$725,000
Bedrooms	7
Bathrooms	3.00
Full Baths	3
Square Footage	2,702
Acres	0.00
Year Built	1999
Type	Single Family
Sub-Type	Detached Single Family
Style	2 Storey
Status	Active

Community Information

Address	38 Kingsbury Crescent
Area	St. Albert
Subdivision	Kingswood



City	St. Albert
County	ALBERTA
Province	AB
Postal Code	T8N 6W6

Amenities

Amenities	See Remarks
Parking	Triple Garage Attached

Interior

Interior Features	ensuite bathroom
Appliances	None
Heating	Forced Air-2, Natural Gas
Stories	3
Has Basement	Yes
Basement	Full, Finished

Exterior

Exterior	Wood, Stucco
Exterior Features	See Remarks
Roof	Cedar Shakes
Construction	Wood, Stucco
Foundation	Concrete Perimeter

Additional Information

Date Listed	April 5th, 2025
Days on Market	27
Zoning	Zone 24
RE / Bank Owned	Yes

DATA IS DEEMED RELIABLE BUT IS NOT GUARANTEED ACCURATE BY THE REALTORS® ASSOCIATION OF EDMONTON. COPYRIGHT 2025 BY THE REALTORS® ASSOCIATION OF EDMONTON. ALL RIGHTS RESERVED. Trademarks are owned or controlled by the Canadian Real Estate Association (CREA) and identify real estate professionals who are members of CREA (REALTOR®, REALTORS®) and/or the quality of services they provide (MLS®, Multiple Listing Service®)

Listing information last updated on May 2nd, 2025 at 4:02am MDT