

\$799,900 - 10068 90 Avenue, Edmonton

MLS® #E4430741

\$799,900

1 Bedroom, 0.00 Bathroom, 998 sqft
Single Family on 0.00 Acres

Strathcona, Edmonton, AB

Endless Potential with Breathtaking Views!
Rare opportunity to own a lot in one of the city’s most sought-after locations. This 32 ft x 131 ft property offers the perfect canvas to build your dream home, with unobstructed views of downtown, the iconic Walterdale Bridge, and the historic Rosedale Water Treatment Plant. Nestled in a prime neighborhood, lots like this don’t come up often—don’t miss your chance to create something truly special.

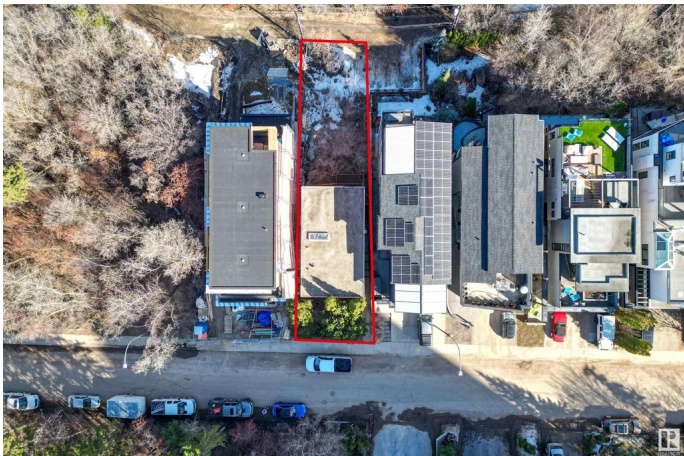
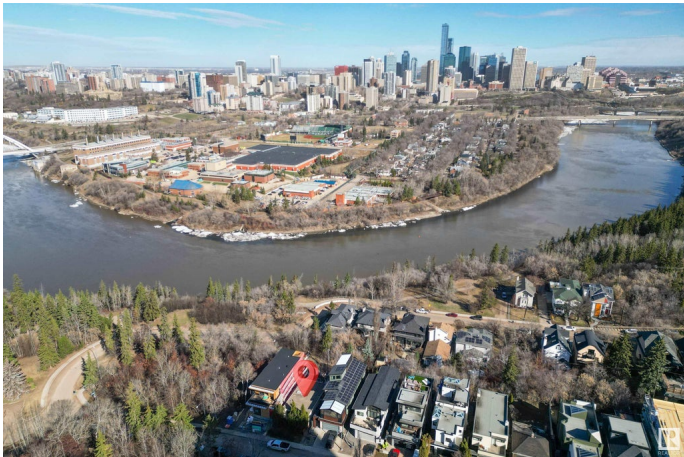
Built in 1963

Essential Information

| | |
|----------------|------------------------|
| MLS® # | E4430741 |
| Price | \$799,900 |
| Bedrooms | 1 |
| Bathrooms | 0.00 |
| Square Footage | 998 |
| Acres | 0.00 |
| Year Built | 1963 |
| Type | Single Family |
| Sub-Type | Detached Single Family |
| Style | 2 Storey |
| Status | Active |

Community Information

Address 10068 90 Avenue



| | |
|-------------|------------|
| Area | Edmonton |
| Subdivision | Strathcona |
| City | Edmonton |
| County | ALBERTA |
| Province | AB |
| Postal Code | T6E 4X1 |

Amenities

| | |
|-----------|-------------------------|
| Amenities | See Remarks |
| Parking | Front/Rear Drive Access |

Interior

| | |
|--------------|---------------------------|
| Appliances | None |
| Heating | Forced Air-1, Natural Gas |
| Stories | 2 |
| Has Basement | Yes |
| Basement | Full, Unfinished |

Exterior

| | |
|-------------------|---|
| Exterior | Wood, Brick, Stucco |
| Exterior Features | Golf Nearby, Hillside, Park/Reserve, Ravine View, River Valley View, Schools, Shopping Nearby, Ski Hill Nearby, Sloping Lot, View Downtown, See Remarks |
| Roof | Tar & Gravel |
| Construction | Wood, Brick, Stucco |
| Foundation | Concrete Perimeter |

Additional Information

| | |
|----------------|------------------|
| Date Listed | April 14th, 2025 |
| Days on Market | 110 |
| Zoning | Zone 15 |

DATA IS DEEMED RELIABLE BUT IS NOT GUARANTEED ACCURATE BY THE REALTORS® ASSOCIATION OF EDMONTON. COPYRIGHT 2025 BY THE REALTORS® ASSOCIATION OF EDMONTON. ALL RIGHTS RESERVED. Trademarks are owned or controlled by the Canadian Real Estate Association (CREA) and identify real estate professionals who are members of CREA (REALTOR®, REALTORS®) and/or the quality of services they provide (MLS®, Multiple Listing Service®)

Listing information last updated on August 2nd, 2025 at 1:17pm MDT