

\$0 - 8 702 12 Avenue, Nisku

MLS® #E4430753

\$0

0 Bedroom, 0.00 Bathroom,
Industrial on 0.00 Acres

Nisku, Nisku, AB

Units 8
 at 702  Avenue in Nisku offer 5,760 sq.ft.Â± of corner office/warehouse space. The site includes double row parking and 10' ceiling height. The location provides access to Airport Road, Highway 2, and Highway 625.

Built in 1980

Essential Information

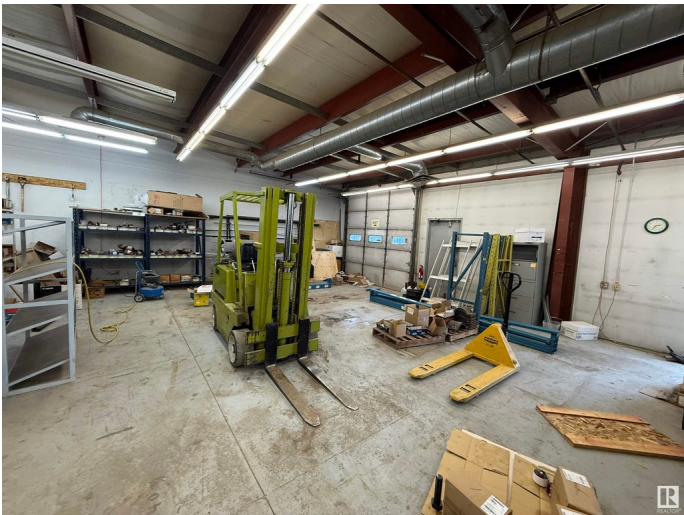
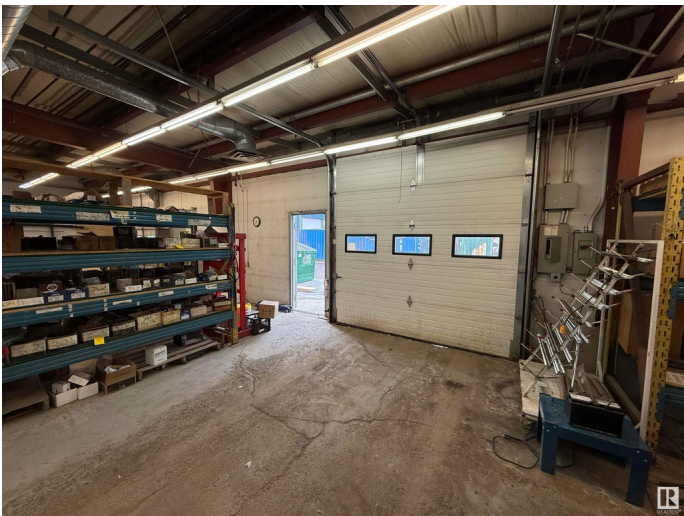
MLS® #	E4430753
Bathrooms	0.00
Acres	0.00
Year Built	1980
Type	Industrial
Status	Active

Community Information

Address	8 702 12 Avenue
Area	Nisku
Subdivision	Nisku
City	Nisku
County	ALBERTA
Province	AB
Postal Code	T9E 7P7

Exterior

Exterior	Mixed
----------	-------



Construction Mixed

Additional Information

Date Listed April 14th, 2025

Days on Market 63

Zoning Zone 81

DATA IS DEEMED RELIABLE BUT IS NOT GUARANTEED ACCURATE BY THE REALTORS® ASSOCIATION OF EDMONTON. COPYRIGHT 2025 BY THE REALTORS® ASSOCIATION OF EDMONTON. ALL RIGHTS RESERVED.Trademarks are owned or controlled by the Canadian Real Estate Association (CREA) and identify real estate professionals who are members of CREA (REALTOR®, REALTORS®) and/or the quality of services they provide (MLS®, Multiple Listing Service®)

Listing information last updated on June 16th, 2025 at 4:02pm MDT