

\$274,900 - 93 4470 Prowse Road, Edmonton

MLS® #E4433232

\$274,900

1 Bedroom, 1.00 Bathroom, 767 sqft

Condo / Townhouse on 0.00 Acres

Paisley, Edmonton, AB

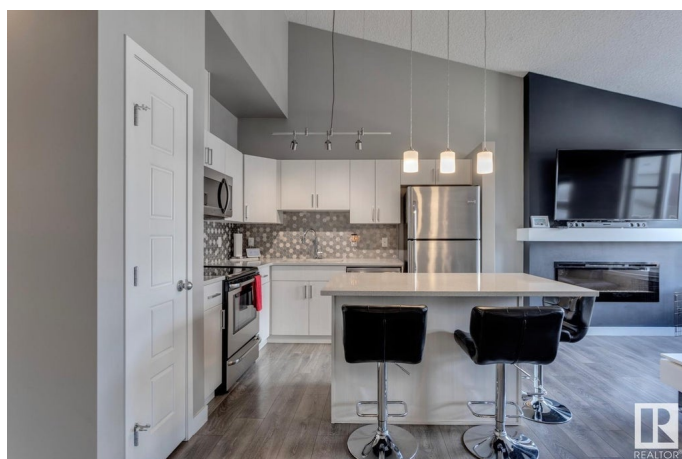
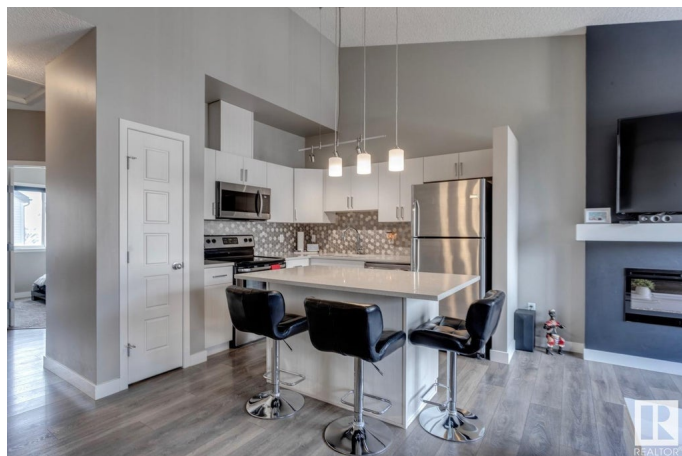
Welcome to the vibrant community of Paisley! This 767 sqft, 1bed + den bungalow style townhome is better than new and will certainly impress. Wide open floor plan w/gorgeous kitchen, vaulted ceilings, quartz counters, s.s. appliances, vinyl flooring, and large island. Living area w/nice fireplace, good sized bedroom and den, 4-pc bath, outdoor patio area, single attached garage, and more! Located close to schools, shopping, golf, dog park, and all other major amenities. Awesome value in a terrific neighborhood!

Built in 2016

Essential Information

MLS® #	E4433232
Price	\$274,900
Bedrooms	1
Bathrooms	1.00
Full Baths	1
Square Footage	767
Acres	0.00
Year Built	2016
Type	Condo / Townhouse
Sub-Type	Townhouse
Style	Bungalow
Status	Active

Community Information



Address	93 4470 Prowse Road
Area	Edmonton
Subdivision	Paisley
City	Edmonton
County	ALBERTA
Province	AB
Postal Code	T6W 3R5

Amenities

Amenities	No Smoking Home, Parking-Visitor, Patio, Vaulted Ceiling
Parking	Single Garage Attached

Interior

Appliances	Dishwasher-Built-In, Dryer, Garage Control, Microwave Hood Fan, Refrigerator, Stove-Electric, Washer, Window Coverings
Heating	Forced Air-1, Natural Gas
Fireplace	Yes
Fireplaces	Mantel
Stories	1
Has Basement	Yes
Basement	Partial, Finished

Exterior

Exterior	Wood, Vinyl
Exterior Features	Airport Nearby, Cul-De-Sac, Golf Nearby, Landscaped, Playground Nearby, Public Transportation, Schools, Shopping Nearby
Roof	Asphalt Shingles
Construction	Wood, Vinyl
Foundation	Concrete Perimeter

Additional Information

Date Listed	April 26th, 2025
Days on Market	4
Zoning	Zone 55
Condo Fee	\$212

DATA IS DEEMED RELIABLE BUT IS NOT GUARANTEED ACCURATE BY THE REALTORS® ASSOCIATION OF EDMONTON. COPYRIGHT 2025 BY THE REALTORS® ASSOCIATION OF EDMONTON. ALL RIGHTS RESERVED. Trademarks are owned or controlled by the Canadian Real Estate Association (CREA) and identify real estate professionals who are members of CREA (REALTOR®, REALTORS®) and/or the quality of services they provide (MLS®, Multiple Listing Service®)

Listing information last updated on April 30th, 2025 at 3:02pm MDT