

## \$419,900 - 13 Huntington Bay, Spruce Grove

MLS® #E4433812

**\$419,900**

4 Bedroom, 2.00 Bathroom, 1,054 sqft

Single Family on 0.00 Acres

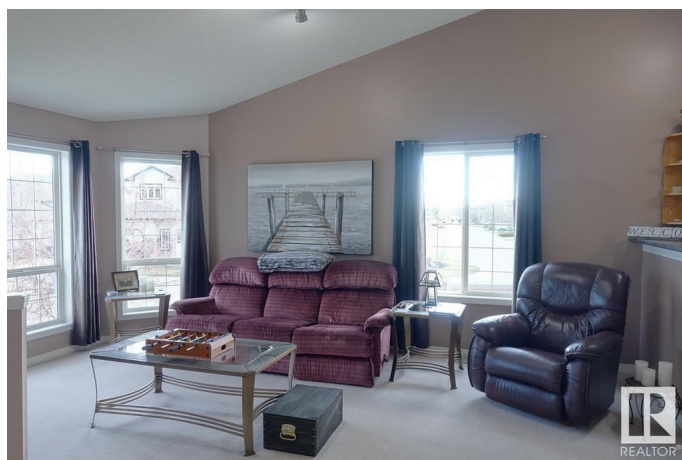
Harvest Ridge, Spruce Grove, AB

2 + 2 bedroom bilevel on a huge lot in a beautiful, quiet cul de sac. This well cared for home has vaulted ceiling on the main floor for that extra feeling of space. The spacious living room has lots of natural light from big windows. The large kitchen features great storage with lots of cabinets and a corner pantry, lots of counter space, an eating bar. The main bedroom has a walk-in closet and dedicated entrance to the main 4 piece bathroom, plus vaulted ceilings. A large 2nd bedroom rounds out the main floor. The fully finished basement has a bright recroom with built-in wall unit, 2 more bedrooms and a full 4pc bathroom. A large storage room with laundry plus a brand new hot water tank (50 gallon). The corner lot is huge and fully fenced with a firepit area, hot tub electrical, deck and great potential for future RV parking. A double attached garage includes a large driveway for off street parking. Close to parks, shopping and schools.

Built in 2003

### Essential Information

MLS® #	E4433812
Price	\$419,900
Bedrooms	4
Bathrooms	2.00



Full Baths	2
Square Footage	1,054
Acres	0.00
Year Built	2003
Type	Single Family
Sub-Type	Detached Single Family
Style	Bi-Level
Status	Active

### Community Information

Address	13 Huntington Bay
Area	Spruce Grove
Subdivision	Harvest Ridge
City	Spruce Grove
County	ALBERTA
Province	AB
Postal Code	T7X 4K7

### Amenities

Amenities	Deck, No Smoking Home, Vaulted Ceiling
Parking Spaces	4
Parking	Double Garage Attached

### Interior

Interior Features	ensuite bathroom
Appliances	Dishwasher-Built-In, Dryer, Garage Opener, Microwave Hood Fan, Refrigerator, Stove-Electric, Washer, Window Coverings, TV Wall Mount
Heating	Forced Air-1, Natural Gas
Stories	2
Has Basement	Yes
Basement	Full, Finished

### Exterior

Exterior	Wood, Vinyl
Exterior Features	Cul-De-Sac, Fenced, Low Maintenance Landscape, Playground Nearby, Schools
Roof	Fiberglass
Construction	Wood, Vinyl
Foundation	Concrete Perimeter

**Additional Information**

Date Listed            May 1st, 2025  
Days on Market       1  
Zoning                 Zone 91

DATA IS DEEMED RELIABLE BUT IS NOT GUARANTEED ACCURATE BY THE REALTORS® ASSOCIATION OF EDMONTON. COPYRIGHT 2025 BY THE REALTORS® ASSOCIATION OF EDMONTON. ALL RIGHTS RESERVED.Trademarks are owned or controlled by the Canadian Real Estate Association (CREA) and identify real estate professionals who are members of CREA (REALTOR®, REALTORS®) and/or the quality of services they provide (MLS®, Multiple Listing Service®)  
Listing information last updated on May 2nd, 2025 at 8:47pm MDT