

## **\$269,900 - 429 16035 132 Street, Edmonton**

MLS® #E4433908

**\$269,900**

2 Bedroom, 2.00 Bathroom, 1,020 sqft

Condo / Townhouse on 0.00 Acres

Oxford, Edmonton, AB

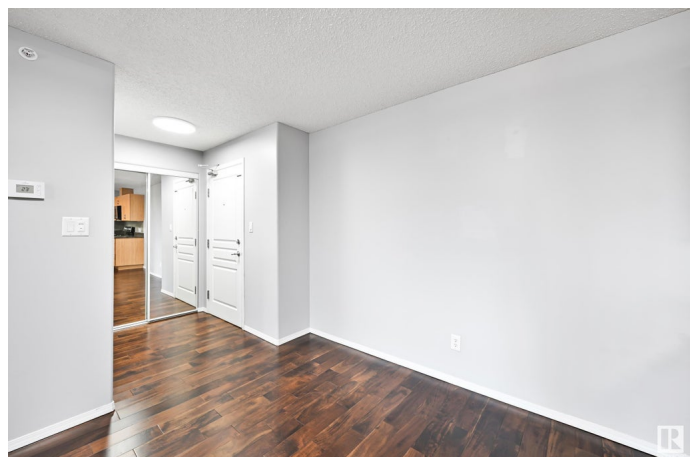
Condo Living at its Finest on the Top Floor!  
Welcome to this gorgeous TWO bedroom, TWO bathroom condo, TWO TITLED UNDERGROUND PARKING STALLS. What a Beautiful City and Partial lake view from this Desireable Top Floor Unit located in Oxford Bay. Gleaming Hardwood Flooring. Open Floor Plan. Spacious Kitchen with Ample Oak Cabinetry, Granite Counters & Upgraded Sink. Centre Island and All Kitchen Appliances. Living room is an excellent size with corner gas fireplace with patio doors leading to your Large Balcony. Master Bedroom features double closets and three piece ensuite. 2nd Bedroom & 4 piece bath w/ rain shower fixture. In-suite laundry located in a storage area. Storage Room included. Two Underground Heated Parking Stalls. Air Conditioning, Gas Line for BBQ, Jacuzzi Tub. Oxford Bay is a well managed building with social rooms, exercise room and a lovely Gazebo overlooking the lake. Extremely private location is Quiet and Peaceful. Pets up to 14" allowed w/ board approval. Excellent Value.

Built in 2005

### **Essential Information**

MLS® # E4433908

Price \$269,900



Bedrooms	2
Bathrooms	2.00
Full Baths	2
Square Footage	1,020
Acres	0.00
Year Built	2005
Type	Condo / Townhouse
Sub-Type	Lowrise Apartment
Style	Single Level Apartment
Status	Active

### **Community Information**

Address	429 16035 132 Street
Area	Edmonton
Subdivision	Oxford
City	Edmonton
County	ALBERTA
Province	AB
Postal Code	T6V 0B4

### **Amenities**

Amenities	Air Conditioner, See Remarks
Parking Spaces	2
Parking	Underground

### **Interior**

Interior Features	ensuite bathroom
Appliances	Dishwasher-Built-In, Dryer, Refrigerator, Stove-Electric, Washer
Heating	Hot Water, Natural Gas
# of Stories	4
Stories	4
Has Basement	Yes
Basement	None, No Basement

### **Exterior**

Exterior	Wood, Stone, Vinyl
Exterior Features	Shopping Nearby, View Lake
Roof	Asphalt Shingles
Construction	Wood, Stone, Vinyl

Foundation                      Concrete Perimeter

**Additional Information**

Date Listed                      May 1st, 2025  
Days on Market                2  
Zoning                              Zone 27  
Condo Fee                        \$750

DATA IS DEEMED RELIABLE BUT IS NOT GUARANTEED ACCURATE BY THE REALTORS® ASSOCIATION OF EDMONTON. COPYRIGHT 2025 BY THE REALTORS® ASSOCIATION OF EDMONTON. ALL RIGHTS RESERVED.Trademarks are owned or controlled by the Canadian Real Estate Association (CREA) and identify real estate professionals who are members of CREA (REALTOR®, REALTORS®) and/or the quality of services they provide (MLS®, Multiple Listing Service®)

Listing information last updated on May 3rd, 2025 at 2:17pm MDT