

\$214,000 - 2119 141 Avenue, Edmonton

MLS® #E4434421

\$214,000

3 Bedroom, 1.00 Bathroom, 1,076 sqft

Condo / Townhouse on 0.00 Acres

Bannerman, Edmonton, AB

This fantastic property is perfect for the investor or first time home buyer. This townhouse features 3 spacious and bright bedrooms. The primary bedroom has custom blackout blinds. It also features an open floor plan which is ideal for entertaining. The modern kitchen boasts stainless steel appliances along with an extra butcher block counter and contemporary finishes. The low-maintenance backyard is perfect for summer gatherings and a pet-friendly space. The unfinished basement presents a great opportunity for customization and it includes a newer washer and dryer (2024). This charming home is conveniently close to Bannerman School, river valley trails, shopping, and transit. Recent updates to the parking lot & landscaping enhance this vibrant community's accessibility. Come make this lovely property yours.



Built in 1979

Essential Information

MLS® #	E4434421
Price	\$214,000
Bedrooms	3
Bathrooms	1.00
Full Baths	1
Square Footage	1,076

Acres	0.00
Year Built	1979
Type	Condo / Townhouse
Sub-Type	Townhouse
Style	2 Storey
Status	Active

Community Information

Address	2119 141 Avenue
Area	Edmonton
Subdivision	Bannerman
City	Edmonton
County	ALBERTA
Province	AB
Postal Code	T5Y 1C4

Amenities

Amenities	No Smoking Home, Parking-I
Parking	Stall

Interior

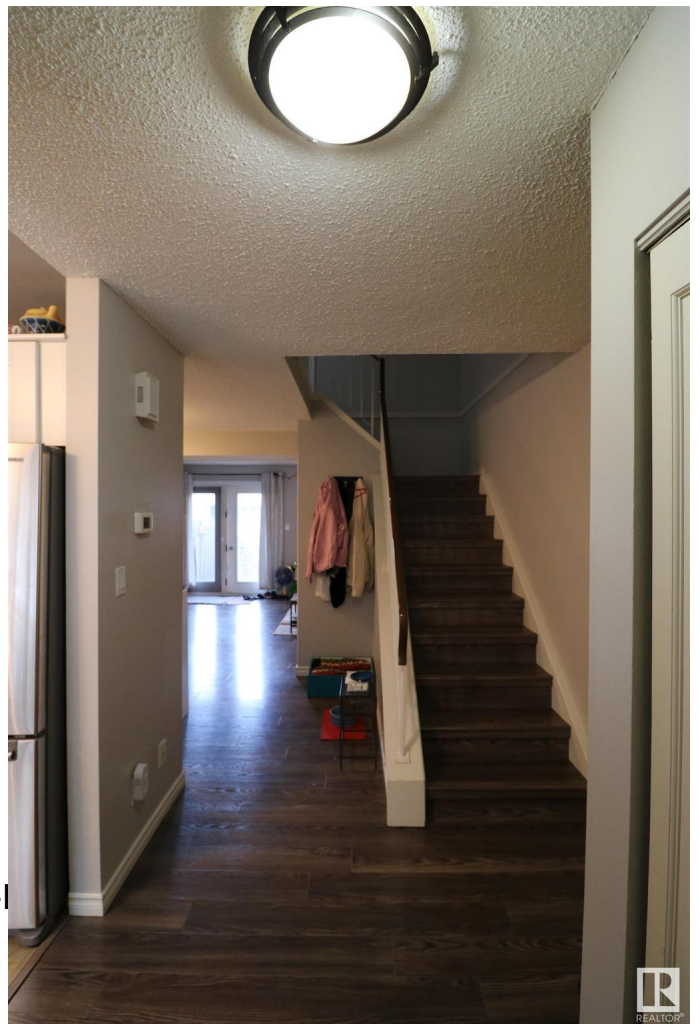
Appliances	Dishwasher-Built-In, Dryer, Refrigerator, Stove-Countertop Electric, Washer
Heating	Forced Air-1, Natural Gas
Stories	2
Has Basement	Yes
Basement	Full, Unfinished

Exterior

Exterior	Wood, Stucco
Exterior Features	Public Transportation, Shopping Nearby
Roof	Asphalt Shingles
Construction	Wood, Stucco
Foundation	Concrete Perimeter

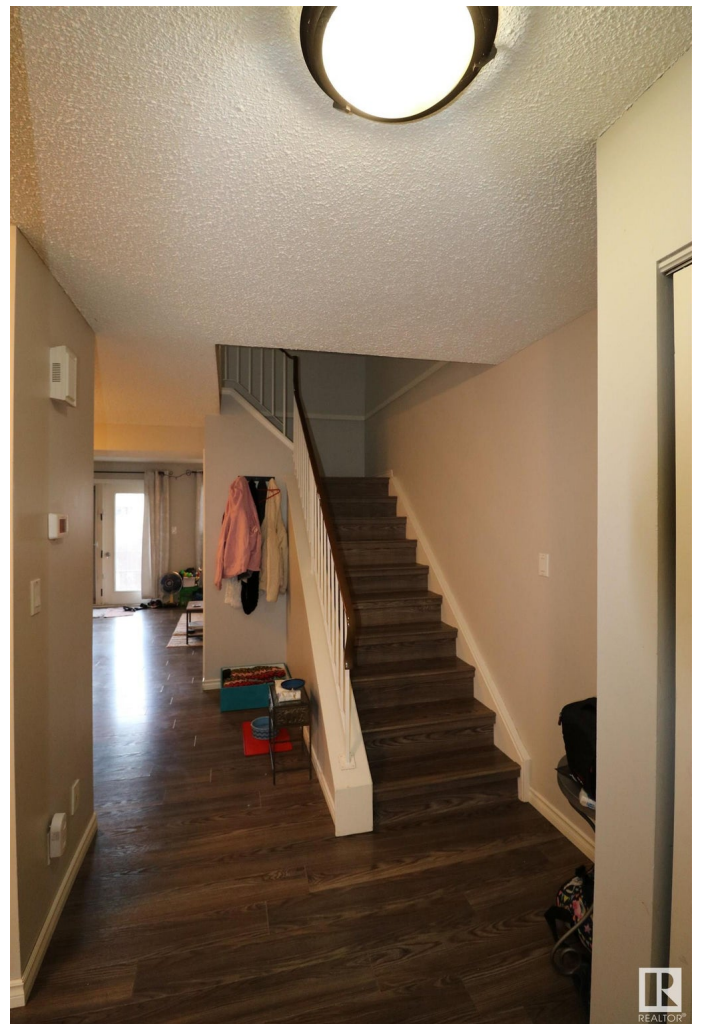
Additional Information

Date Listed	May 4th, 2025
Days on Market	9
Zoning	Zone 35



Condo Fee

\$416



DATA IS DEEMED RELIABLE BUT IS NOT GUARANTEED ACCURATE BY THE REALTORS® ASSOCIATION OF EDMONTON. COPYRIGHT 2025 BY THE REALTORS® ASSOCIATION OF EDMONTON. ALL RIGHTS RESERVED. Trademarks are owned or controlled by the Canadian Real Estate Association (CREA) and identify real estate professionals who are members of CREA (REALTOR®, REALTORS®) and/or the quality of services they provide (MLS®, Multiple Listing Service®)

Listing information last updated on May 13th, 2025 at 9:17pm MDT