

## \$449,900 - 11438 162a Avenue, Edmonton

MLS® #E4434798

**\$449,900**

4 Bedroom, 2.00 Bathroom, 1,046 sqft

Single Family on 0.00 Acres

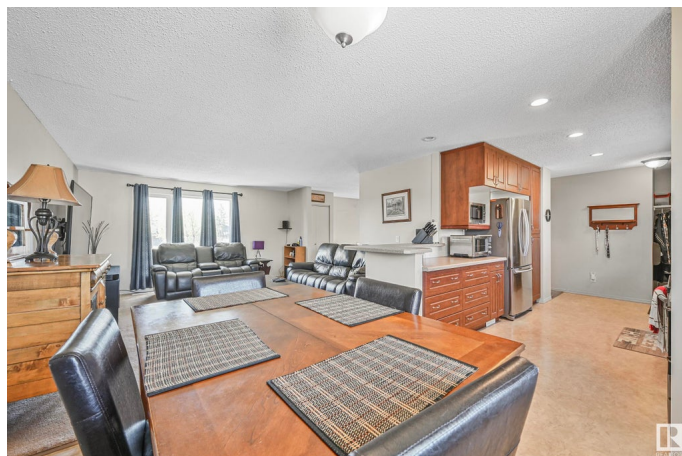
Dunluce, Edmonton, AB

Amazing Home! Welcome to this BILEVEL ON A HUGE LOT, in the highly desirable area of Castle Downs! Offering elegance, and magnificent living spaces. The Main Floor hosts a warm living space imbued with natural light. The kitchen outstanding from every angle, showcases tasteful finishes, plenty of Counter space, Stainless Steel Appliances. The Main Floor showcases 2 Large Bedrooms, & a Full Bathrooms. The Fully Finished Basement has a Large Living Room, cozy family room, 2 large bedrooms, and a bathroom. Oversized Double Detached Garage. Large Backyard is your own private oasis, mature tree's, and shrubs. Upgrade's: Windows, Shingles, Flooring, Furnace, Water Tank, Kitchen, Bathrooms, Deck, A/C. Located in a quiet a Cul-De-Sac with plenty of schools and amenities.

Built in 1976

### Essential Information

MLS® #	E4434798
Price	\$449,900
Bedrooms	4
Bathrooms	2.00
Full Baths	2
Square Footage	1,046
Acres	0.00



Year Built	1976
Type	Single Family
Sub-Type	Detached Single Family
Style	Bi-Level
Status	Active

### Community Information

Address	11438 162a Avenue
Area	Edmonton
Subdivision	Dunluce
City	Edmonton
County	ALBERTA
Province	AB
Postal Code	T5X 2L7

### Amenities

Amenities	Air Conditioner
Parking	Double Garage Detached, Over Sized

### Interior

Appliances	Air Conditioning-Central, Dishwasher-Built-In, Dryer, Hood Fan, Refrigerator, Storage Shed, Stove-Electric, Washer, Window Coverings
Heating	Forced Air-1, Natural Gas
Stories	2
Has Basement	Yes
Basement	Full, Finished

### Exterior

Exterior	Wood, Vinyl
Exterior Features	Public Transportation, Schools, Shopping Nearby
Roof	Asphalt Shingles
Construction	Wood, Vinyl
Foundation	Concrete Perimeter

### Additional Information

Date Listed	May 5th, 2025
Days on Market	13
Zoning	Zone 27

DATA IS DEEMED RELIABLE BUT IS NOT GUARANTEED ACCURATE BY THE REALTORS® ASSOCIATION OF

EDMONTON. COPYRIGHT 2025 BY THE REALTORS® ASSOCIATION OF EDMONTON. ALL RIGHTS RESERVED.Trademarks are owned or controlled by the Canadian Real Estate Association (CREA) and identify real estate professionals who are members of CREA (REALTOR®, REALTORS®) and/or the quality of services they provide (MLS®, Multiple Listing Service®)

Listing information last updated on May 18th, 2025 at 7:02pm MDT