

\$569,900 - 3235 28 Avenue, Edmonton

MLS® #E4435022

\$569,900

4 Bedroom, 3.50 Bathroom, 1,883 sqft

Single Family on 0.00 Acres

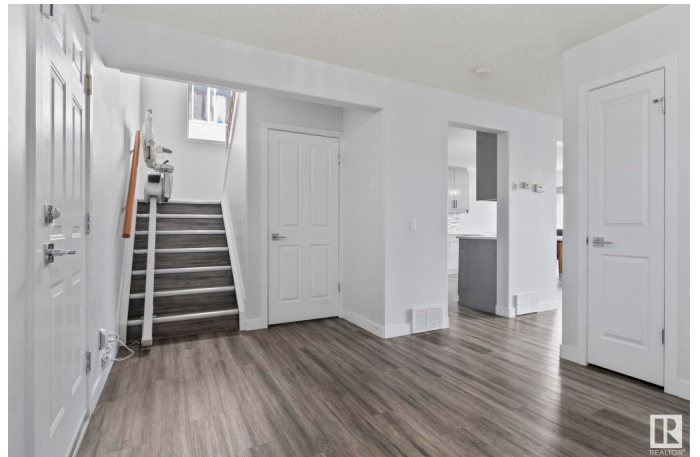
Silver Berry, Edmonton, AB

Exceptional Opportunity in Silver Berry! This fully renovated 2-storey home with a south-facing backyard is nestled in a quiet cul-de-sac near a park. Offering 1883 sq. ft. plus a finished basement, with quick access to Anthony Henday & Whitemud Drive. The main floor features a bright living room with gas fireplace, spacious island kitchen with corner pantry, sunny dining area, and 2-pce bath. Upstairs offers 4 bedrooms, including a primary with 3-pce ensuite and walk-in closet, plus laundry and full bath. The basement includes a family room, 4th bedroom, den, and full bath. Enjoy a heated, finished double garage, landscaped yard, 12'x16' deck, and patio. Recent upgrades: new roof (2021), hot water tank (2024), flooring, paint, kitchen, counters, appliances, lighting, and plumbing fixtures (2021). A perfect blend of style, comfort, and convenience!

Built in 2002

Essential Information

MLS® #	E4435022
Price	\$569,900
Bedrooms	4
Bathrooms	3.50
Full Baths	3
Half Baths	1



Square Footage	1,883
Acres	0.00
Year Built	2002
Type	Single Family
Sub-Type	Detached Single Family
Style	2 Storey
Status	Active

Community Information

Address	3235 28 Avenue
Area	Edmonton
Subdivision	Silver Berry
City	Edmonton
County	ALBERTA
Province	AB
Postal Code	T6T 1P6

Amenities

Amenities	Closet Organizers, Deck, Detectors Smoke, No Animal Home, No Smoking Home
Parking	Double Garage Attached

Interior

Interior Features	ensuite bathroom
Appliances	Dishwasher-Built-In, Dryer, Garage Control, Garage Opener, Hood Fan, Stove-Electric, Washer, Window Coverings, Refrigerators-Two, Garage Heater
Heating	Forced Air-1, Natural Gas
Fireplace	Yes
Fireplaces	Wall Mount
Stories	3
Has Basement	Yes
Basement	Full, Finished

Exterior

Exterior	Wood, Vinyl
Exterior Features	Airport Nearby, Cul-De-Sac, Fenced, Flat Site, Golf Nearby, Landscaped, Level Land
Roof	Asphalt Shingles

Construction	Wood, Vinyl
Foundation	Concrete Perimeter

Additional Information

Date Listed	May 7th, 2025
Days on Market	6
Zoning	Zone 30

DATA IS DEEMED RELIABLE BUT IS NOT GUARANTEED ACCURATE BY THE REALTORS® ASSOCIATION OF EDMONTON. COPYRIGHT 2025 BY THE REALTORS® ASSOCIATION OF EDMONTON. ALL RIGHTS RESERVED.Trademarks are owned or controlled by the Canadian Real Estate Association (CREA) and identify real estate professionals who are members of CREA (REALTOR®, REALTORS®) and/or the quality of services they provide (MLS®, Multiple Listing Service®)

Listing information last updated on May 14th, 2025 at 3:32am MDT