

\$429,000 - 14812 94 Street, Edmonton

MLS® #E4436723

\$429,000

4 Bedroom, 2.00 Bathroom, 1,350 sqft

Single Family on 0.00 Acres

Evansdale, Edmonton, AB

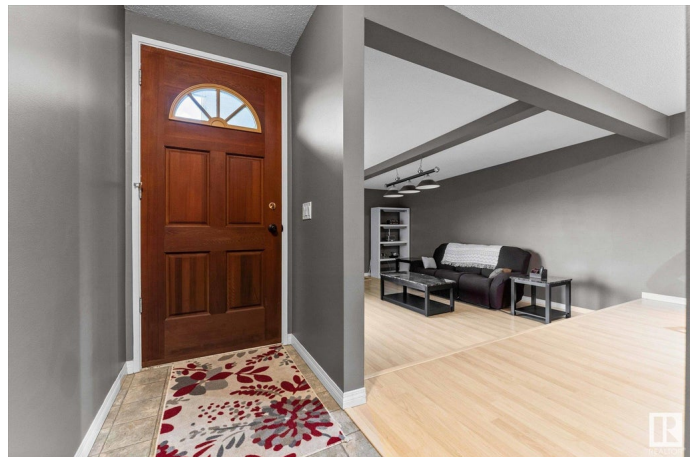
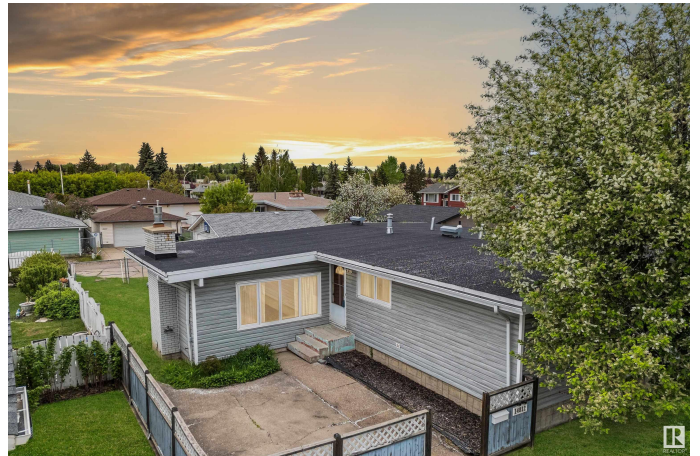
Welcome home to the family friendly community of Evansdale! This 4 bedroom, 2 bath home with over 2400 sq/ft of living space has many upgrades and a functional layout. The sunken living room with gas FP & large windows flows into the dining area and spacious kitchen with SS appliances and patio doors. 3 bedrooms + HUGE 4-pc bathroom with new jacuzzi tub are upstairs, with the primary having a large walk-in closet. Downstairs is a 4-pc bathroom, 4th bedroom and large family room plus tons of storage. (Back door allows for future suite potential!) The massive backyard has a newer deck w/ gas BBQ line, newer fence, oversized double garage (w/ gas line) and parking pad for RV storage. You will also enjoy the perennials, fire pit and mature trees! Updates include triple glazed windows, ew stove & dishwasher in 2022, new roof in 2021, new jacuzzi tub in 2024, HWT + furnace in 2020, new garage opener in 2024. Conveniently located across from Evansdale School and steps from transit, this home has it all!

Built in 1970

Essential Information

MLS® # E4436723

Price \$429,000



Bedrooms	4
Bathrooms	2.00
Full Baths	2
Square Footage	1,350
Acres	0.00
Year Built	1970
Type	Single Family
Sub-Type	Detached Single Family
Style	Bungalow
Status	Active

Community Information

Address	14812 94 Street
Area	Edmonton
Subdivision	Evansdale
City	Edmonton
County	ALBERTA
Province	AB
Postal Code	T5E 3W5

Amenities

Amenities	Deck, Patio, Sauna; Swirlpool; Steam
Parking	Double Garage Detached, RV Parking

Interior

Appliances	Air Cleaner-Electronic, Dishwasher-Built-In, Dryer, Microwave Hood Fan, Refrigerator, Stove-Electric, Washer, Window Coverings
Heating	Forced Air-1, Natural Gas
Fireplace	Yes
Fireplaces	Glass Door, Mantel
Stories	2
Has Basement	Yes
Basement	Full, Finished

Exterior

Exterior	Wood, Vinyl
Exterior Features	Back Lane, Fenced, Landscaped, Park/Reserve, Playground Nearby, Public Transportation, Schools, Shopping Nearby
Roof	Tar & Gravel

Construction	Wood, Vinyl
Foundation	Concrete Perimeter

School Information

Elementary	Evansdale School
Middle	Dickinsfield School
High	Queen Elizabeth School

Additional Information

Date Listed	May 15th, 2025
Days on Market	3
Zoning	Zone 02

DATA IS DEEMED RELIABLE BUT IS NOT GUARANTEED ACCURATE BY THE REALTORS® ASSOCIATION OF EDMONTON. COPYRIGHT 2025 BY THE REALTORS® ASSOCIATION OF EDMONTON. ALL RIGHTS RESERVED.Trademarks are owned or controlled by the Canadian Real Estate Association (CREA) and identify real estate professionals who are members of CREA (REALTOR®, REALTORS®) and/or the quality of services they provide (MLS®, Multiple Listing Service®)

Listing information last updated on May 18th, 2025 at 6:32pm MDT