

\$240,000 - 667 Millbourne Rd, Edmonton

MLS® #E4436996

\$240,000

3 Bedroom, 1.50 Bathroom, 1,151 sqft

Condo / Townhouse on 0.00 Acres

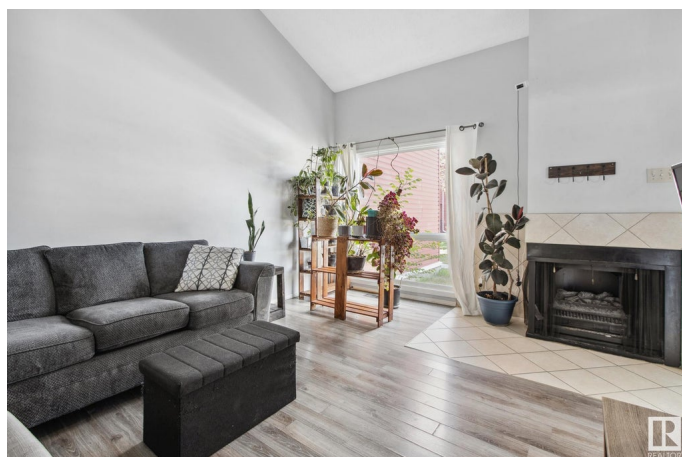
Lee Ridge, Edmonton, AB

Super cozy end-unit chalet-style 2-storey condo in desirable Lee Ridge Village, North Mill Woods! Bright open living room with vaulted ceiling and wood-burning corner fireplace. Updated white kitchen with new countertops, upgraded appliances, island with bar seating, and ceramic tile flooring. Sliding doors lead to a large, private west-facing yard... perfect for sunny afternoons! Upstairs offers 3 bedrooms, including a spacious primary with double windows and mirrored closet. Renovated 4-piece bath up plus updated half bath on main. Partially finished basement with rec room and laundry. Parking stall right outside the unit! Well-managed complex with recent upgrades: new siding, insulation, shingles, and windows. Prime location close to 3 schools, LRT station, and Millbourne Market Mall. Move-in ready, this carefree living townhouse awaits for you!

Built in 1979

Essential Information

MLS® #	E4436996
Price	\$240,000
Bedrooms	3
Bathrooms	1.50
Full Baths	1
Half Baths	1



Square Footage	1,151
Acres	0.00
Year Built	1979
Type	Condo / Townhouse
Sub-Type	Townhouse
Style	2 Storey
Status	Active

Community Information

Address	667 Millbourne Rd
Area	Edmonton
Subdivision	Lee Ridge
City	Edmonton
County	ALBERTA
Province	AB
Postal Code	T6K 3H3

Amenities

Amenities	On Street Parking, Detectors Smoke, Vaulted Ceiling, Vinyl Windows
Parking Spaces	2
Parking	Stall, See Remarks

Interior

Appliances	Dishwasher-Built-In, Dryer, Hood Fan, Refrigerator, Stove-Electric, Washer - Energy Star
Heating	Forced Air-1, Natural Gas
Stories	2
Has Basement	Yes
Basement	Full, Partially Finished

Exterior

Exterior	Wood, Vinyl
Exterior Features	Fenced, Landscaped, Low Maintenance Landscape, Picnic Area, Playground Nearby, Public Swimming Pool, Public Transportation, Schools, Shopping Nearby
Roof	Asphalt Shingles
Construction	Wood, Vinyl
Foundation	Concrete Perimeter

Additional Information

Date Listed	May 16th, 2025
Days on Market	23
Zoning	Zone 29
Condo Fee	\$370

DATA IS DEEMED RELIABLE BUT IS NOT GUARANTEED ACCURATE BY THE REALTORS® ASSOCIATION OF EDMONTON. COPYRIGHT 2025 BY THE REALTORS® ASSOCIATION OF EDMONTON. ALL RIGHTS RESERVED. Trademarks are owned or controlled by the Canadian Real Estate Association (CREA) and identify real estate professionals who are members of CREA (REALTOR®, REALTORS®) and/or the quality of services they provide (MLS®, Multiple Listing Service®)

Listing information last updated on June 7th, 2025 at 9:47pm MDT