

\$664,900 - 1039 Allendale Crescent, Sherwood Park

MLS® #E4438232

\$664,900

3 Bedroom, 2.50 Bathroom, 2,395 sqft

Single Family on 0.00 Acres

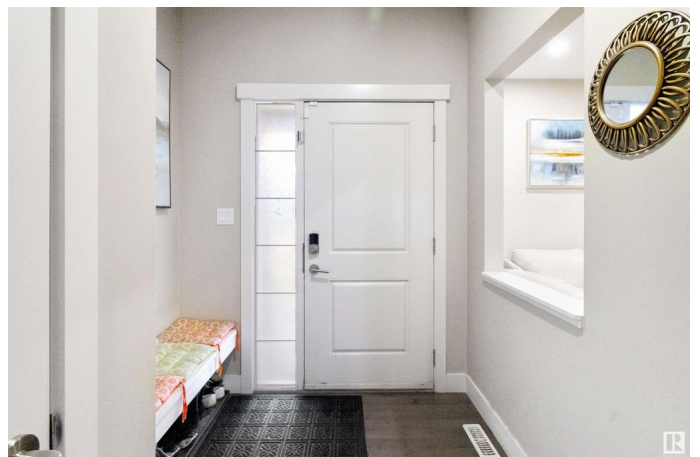
Aspen Trails, Sherwood Park, AB

Welcome to this beautiful family home in Aspen Trails! One of Sherwood Park's most popular communities! Amazing location close to parks, shopping and more! Fabulous floor plan with nearly 2400 square feet and a perfect home for entertaining! Featuring a spacious living room with gas fireplace and high ceilings. Beautiful kitchen with Granite countertops, useable island, stainless steel appliances, walk-through pantry and large dining area. Main floor office/flex room, laundry area and powder room. Upstairs is a Big Bonus Room with vaulted ceilings. There are 3 bedrooms and a 4 piece bathroom. The Primary Bedroom has a gorgeous 4 piece ensuite and walk-in closet. The unspoiled basement is left for your creativity. Lovely and fully fenced backyard with deck to enjoy. Double attached garage and great curb appeal. Welcome to your new home! Visit REALTOR® website for more information.

Built in 2015

Essential Information

MLS® #	E4438232
Price	\$664,900
Bedrooms	3
Bathrooms	2.50
Full Baths	2



Half Baths	1
Square Footage	2,395
Acres	0.00
Year Built	2015
Type	Single Family
Sub-Type	Detached Single Family
Style	2 Storey
Status	Active

Community Information

Address	1039 Allendale Crescent
Area	Sherwood Park
Subdivision	Aspen Trails
City	Sherwood Park
County	ALBERTA
Province	AB
Postal Code	T8H 0X7

Amenities

Amenities	Ceiling 9 ft., Deck
Parking	Double Garage Attached

Interior

Interior Features	ensuite bathroom
Appliances	Dishwasher-Built-In, Dryer, Garage Control, Garage Opener, Hood Fan, Refrigerator, Stove-Electric, Washer, Window Coverings
Heating	Forced Air-1, Natural Gas
Fireplace	Yes
Fireplaces	Tile Surround
Stories	2
Has Basement	Yes
Basement	Full, Unfinished

Exterior

Exterior	Wood, Vinyl
Exterior Features	Fenced, Landscaped, Playground Nearby, Public Transportation, Schools, Shopping Nearby
Roof	Asphalt Shingles
Construction	Wood, Vinyl

Foundation Concrete Perimeter

Additional Information

Date Listed May 22nd, 2025
Days on Market 26
Zoning Zone 25

DATA IS DEEMED RELIABLE BUT IS NOT GUARANTEED ACCURATE BY THE REALTORS® ASSOCIATION OF EDMONTON. COPYRIGHT 2025 BY THE REALTORS® ASSOCIATION OF EDMONTON. ALL RIGHTS RESERVED.Trademarks are owned or controlled by the Canadian Real Estate Association (CREA) and identify real estate professionals who are members of CREA (REALTOR®, REALTORS®) and/or the quality of services they provide (MLS®, Multiple Listing Service®)
Listing information last updated on June 17th, 2025 at 1:47am MDT