

## \$279,900 - 11514 88 Street, Edmonton

MLS® #E4438428

**\$279,900**

3 Bedroom, 2.00 Bathroom, 789 sqft

Single Family on 0.00 Acres

Parkdale (Edmonton), Edmonton, AB

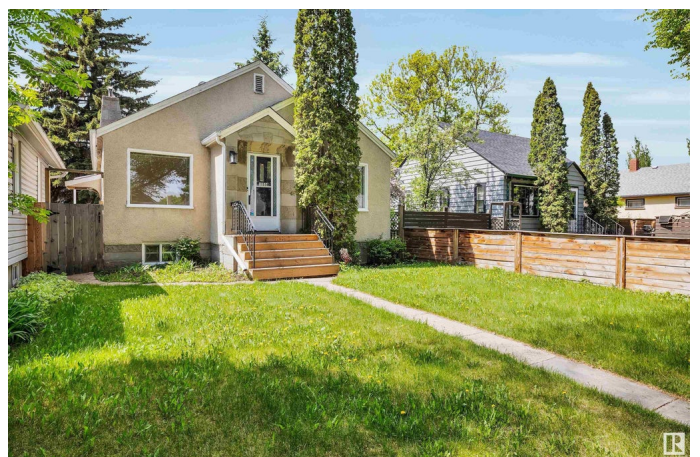
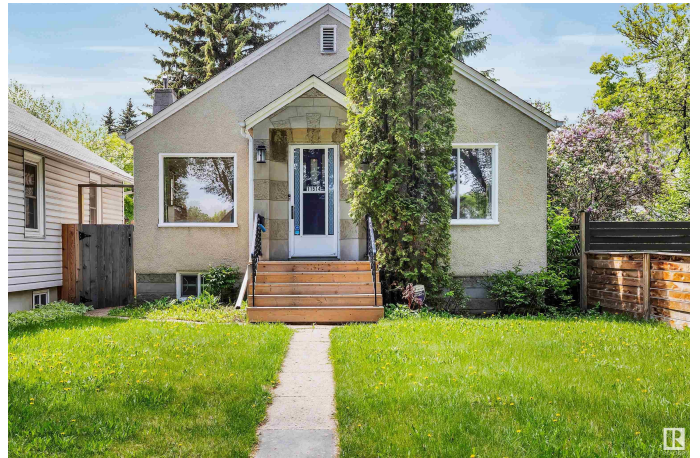
Welcome to this character home in gorgeous Parkdale! 3 bedrooms, 2 full bathrooms, lovely hardwood flooring & large windows throughout with excellent natural light. NEW main water & sewer line (14k)! Newer shingles! Both tubs in the home have been professionally resurfaced! New paint on main floor! High efficient furnace & HWT! The main floor features an inviting living room, kitchen with enough space for a breakfast table, a MASSIVE primary bedroom, a 2nd bedroom overlooking the private backyard, and a central bathroom! In the basement you'll find a large 3rd bedroom, a recreation room, a hobby room/den, utility room & a laundry space! This amazing bungalow has an oversized single garage with lots of room for extra parking. The rear yard is peaceful and with a little love it could be your very own private oasis! Commonwealth Stadium is only a 2min drive away, the famous River Valley is 4 min and Rogers Place is 8min! This is an affordable maintained home in a wonderful tree-lined street- what a gem!

Built in 1945

### Essential Information

MLS® # E4438428

Price \$279,900



Bedrooms	3
Bathrooms	2.00
Full Baths	2
Square Footage	789
Acres	0.00
Year Built	1945
Type	Single Family
Sub-Type	Detached Single Family
Style	Bungalow
Status	Active

### Community Information

Address	11514 88 Street
Area	Edmonton
Subdivision	Parkdale (Edmonton)
City	Edmonton
County	ALBERTA
Province	AB
Postal Code	T5B 3R3

### Amenities

Amenities	No Animal Home, No Smoking Home, See Remarks
Parking	Single Garage Detached

### Interior

Appliances	Dishwasher-Built-In, Dryer, Fan-Ceiling, Hood Fan, Refrigerator, Stove-Electric, Washer, Window Coverings
Heating	Forced Air-1, Natural Gas
Stories	2
Has Basement	Yes
Basement	Full, Finished

### Exterior

Exterior	Wood, Stucco
Exterior Features	Fenced, Playground Nearby, Public Transportation, Schools, Shopping Nearby
Roof	Asphalt Shingles
Construction	Wood, Stucco
Foundation	Concrete Perimeter

**Additional Information**

Date Listed            May 24th, 2025  
Days on Market      10  
Zoning                Zone 05

DATA IS DEEMED RELIABLE BUT IS NOT GUARANTEED ACCURATE BY THE REALTORS® ASSOCIATION OF EDMONTON. COPYRIGHT 2025 BY THE REALTORS® ASSOCIATION OF EDMONTON. ALL RIGHTS RESERVED.Trademarks are owned or controlled by the Canadian Real Estate Association (CREA) and identify real estate professionals who are members of CREA (REALTOR®, REALTORS®) and/or the quality of services they provide (MLS®, Multiple Listing Service®)  
Listing information last updated on June 3rd, 2025 at 7:47am MDT