

\$375,000 - 414, 67325 Churchill Park Road, Rural Lac La Biche County

MLS® #E4441333

\$375,000

0 Bedroom, 0.00 Bathroom,
Rural on 4.62 Acres

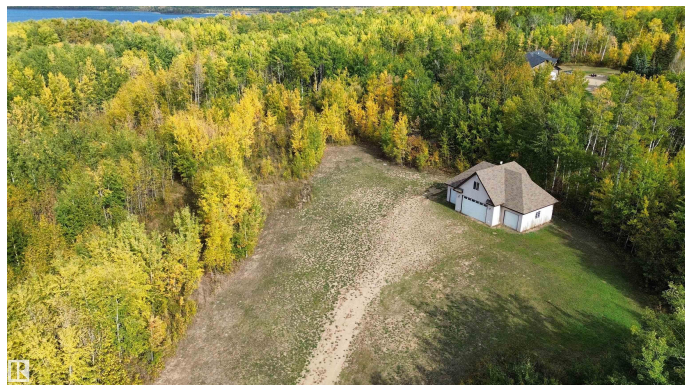
Lakeview Estate_LLBC, Rural Lac La Biche
County, AB

Looking for space, privacy, and a head start on your dream property? Check out this 4.62-acre lot just minutes from Lac La Biche and only minutes away from the water! It comes with a in floor heated 4-car garage that already has power, roughed in plumbing and a loft space ready to be finished perfect for extra storage or a future guest suite. Thereâ€™s a cleared area ready for your home, and water, sewer and natural gas are right at the property line. A driveway is already in place, and the surrounding trees give you that extra bit of privacy and peace. Whether you're planning to build now or just want a weekend spot with great potential, this oneâ€™s worth a look!

Essential Information

MLS® #	E4441333
Price	\$375,000
Bathrooms	0.00
Acres	4.62
Type	Rural
Sub-Type	Vacant Lot/Land
Status	Active

Community Information



Address	414, 67325 Churchill Park Road
Area	Rural Lac La Biche County
Subdivision	Lakeview Estate_LLBC
City	Rural Lac La Biche County
County	ALBERTA
Province	AB
Postal Code	T0A 2C1

Exterior

Exterior Features Flat Site, Level Land, See Remarks

Additional Information

Date Listed	June 9th, 2025
Days on Market	111
Zoning	Zone 60

DATA IS DEEMED RELIABLE BUT IS NOT GUARANTEED ACCURATE BY THE REALTORS® ASSOCIATION OF EDMONTON. COPYRIGHT 2025 BY THE REALTORS® ASSOCIATION OF EDMONTON. ALL RIGHTS RESERVED. Trademarks are owned or controlled by the Canadian Real Estate Association (CREA) and identify real estate professionals who are members of CREA (REALTOR®, REALTORS®) and/or the quality of services they provide (MLS®, Multiple Listing Service®)

Listing information last updated on September 28th, 2025 at 3:02am MDT