

\$204,900 - 9921 171 Avenue, Edmonton

MLS® #E4442346

\$204,900

3 Bedroom, 2.50 Bathroom, 1,135 sqft

Condo / Townhouse on 0.00 Acres

Baturyn, Edmonton, AB

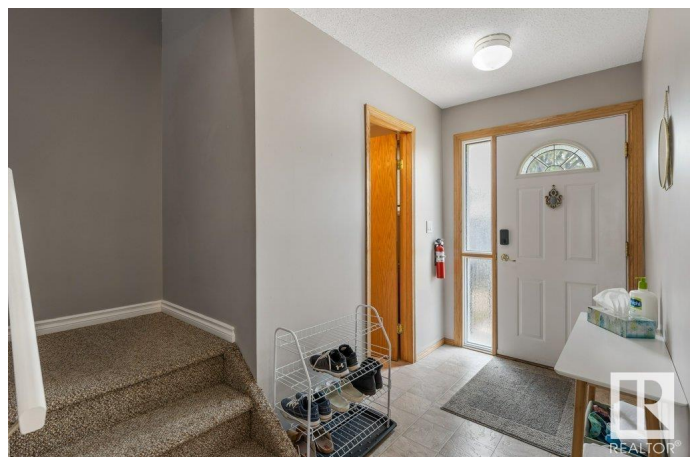
Country Roadsâ€”take me home with this exceptional opportunity in a meticulously maintained complex. Step into the heart of the homeâ€”a well-equipped kitchen boasting all essential appliances, seamlessly flowing into a spacious dining area. The generous living room, adorned with gleaming hardwood floors, offers a perfect space for relaxation and entertainment, complete with patio doors leading to your private deck for those serene evenings. Upstairs, you'll find three generously sized bedrooms and a beautifully appointed full bath, offering comfort and privacy for the whole family. The fully finished basement expands your living space, providing a versatile recreation room, a convenient three-piece bath, laundry facilities and additional storage. Situated just steps away from a peaceful park, top-rated schools, shopping destinations, and public transportation, this home is perfectly positioned for a balanced lifestyle. Donâ€™t miss the chance to make this gem your ownâ€”a true must-see!

Built in 1979

Essential Information

MLS® # E4442346

Price \$204,900



Bedrooms	3
Bathrooms	2.50
Full Baths	2
Half Baths	1
Square Footage	1,135
Acres	0.00
Year Built	1979
Type	Condo / Townhouse
Sub-Type	Townhouse
Style	2 Storey
Status	Active

Community Information

Address	9921 171 Avenue
Area	Edmonton
Subdivision	Baturyn
City	Edmonton
County	ALBERTA
Province	AB
Postal Code	T5X 4X2

Amenities

Amenities	Closet Organizers, Deck, Gazebo, No Smoking Home, Parking-Plug-Ins, Parking-Visitor
Parking Spaces	1
Parking	Stall

Interior

Appliances	Dishwasher-Built-In, Dryer, Fan-Ceiling, Microwave Hood Fan, Oven-Built-In, Refrigerator, Stove-Countertop Electric, Washer, Window Coverings
Heating	Forced Air-1, Natural Gas
Stories	3
Has Basement	Yes
Basement	Full, Finished

Exterior

Exterior	Wood, Hardie Board Siding
Exterior Features	Back Lane, Flat Site, Fruit Trees/Shrubs, Landscaped, Park/Reserve,

Picnic Area, Playground Nearby, Public Transportation, Schools, Shopping Nearby

Roof	Asphalt Shingles
Construction	Wood, Hardie Board Siding
Foundation	Slab

Additional Information

Date Listed	June 13th, 2025
Days on Market	3
Zoning	Zone 27
Condo Fee	\$406

DATA IS DEEMED RELIABLE BUT IS NOT GUARANTEED ACCURATE BY THE REALTORS® ASSOCIATION OF EDMONTON. COPYRIGHT 2025 BY THE REALTORS® ASSOCIATION OF EDMONTON. ALL RIGHTS RESERVED. Trademarks are owned or controlled by the Canadian Real Estate Association (CREA) and identify real estate professionals who are members of CREA (REALTOR®, REALTORS®) and/or the quality of services they provide (MLS®, Multiple Listing Service®)

Listing information last updated on June 16th, 2025 at 3:02pm MDT