

\$644,500 - 3671 8 Street, Edmonton

MLS® #E4442961

\$644,500

5 Bedroom, 3.00 Bathroom, 2,323 sqft

Single Family on 0.00 Acres

Maple Crest, Edmonton, AB

Amazing location, amazing neighborhood, and an amazing home waiting for a new owner!

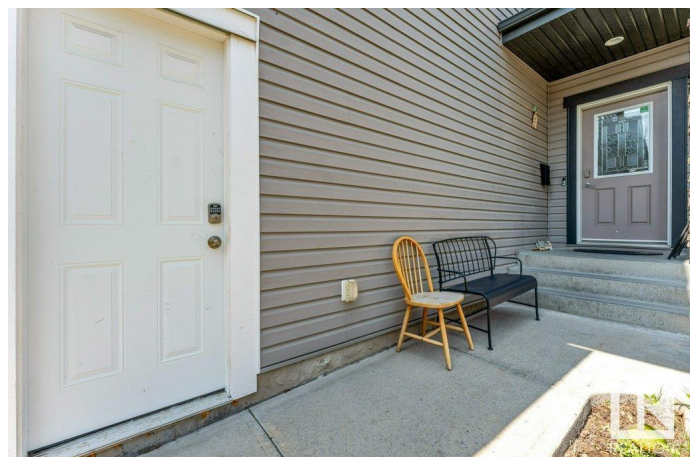
This beautiful 2-storey home in Maple offers 2,322 sq ft of well-designed living space.

Upstairs features 4 spacious bedrooms, a luxurious 5-piece ensuite, a 4-piece main bath, laundry, and a bright bonus room. The main floor boasts a large foyer, a den or 5th bedroom, a stylish 3-piece bath, a cozy great room with a gas fireplace, and a modern kitchen with granite countertops, a large island, pantry, and spacious dining area. The basement is unfinished and ready for your ideas. Park comfortably in the double attached garage and on 5 car Driveway. Located on a quiet cul-de-sac backing onto a walkway and green space, this home offers peace and privacy. A perfect family home in a fantastic location!

Built in 2014

Essential Information

| | |
|----------------|-----------|
| MLS® # | E4442961 |
| Price | \$644,500 |
| Bedrooms | 5 |
| Bathrooms | 3.00 |
| Full Baths | 3 |
| Square Footage | 2,323 |
| Acres | 0.00 |



| | |
|------------|------------------------|
| Year Built | 2014 |
| Type | Single Family |
| Sub-Type | Detached Single Family |
| Style | 2 Storey |
| Status | Active |

Community Information

| | |
|-------------|---------------|
| Address | 3671 8 Street |
| Area | Edmonton |
| Subdivision | Maple Crest |
| City | Edmonton |
| County | ALBERTA |
| Province | AB |
| Postal Code | T6T 0S4 |

Amenities

| | |
|----------------|------------------------------------|
| Amenities | Ceiling 9 ft., Deck, Parking-Extra |
| Parking Spaces | 7 |
| Parking | Double Garage Attached |

Interior

| | |
|-------------------|---|
| Interior Features | ensuite bathroom |
| Appliances | Dishwasher-Built-In, Dryer, Garage Control, Garage Opener, Hood Fan, Refrigerator, Stove-Electric, Washer |
| Heating | Forced Air-1, Natural Gas |
| Fireplace | Yes |
| Fireplaces | Mantel |
| Stories | 2 |
| Has Basement | Yes |
| Basement | Full, Unfinished |

Exterior

| | |
|-------------------|--|
| Exterior | Wood, Stone, Vinyl |
| Exterior Features | Backs Onto Park/Trees, Cul-De-Sac, Fenced, Landscaped, Playground Nearby, Public Transportation, Shopping Nearby |
| Roof | Asphalt Shingles |
| Construction | Wood, Stone, Vinyl |
| Foundation | Concrete Perimeter |

Additional Information

Date Listed June 18th, 2025

Days on Market 5

Zoning Zone 30

DATA IS DEEMED RELIABLE BUT IS NOT GUARANTEED ACCURATE BY THE REALTORS® ASSOCIATION OF EDMONTON. COPYRIGHT 2025 BY THE REALTORS® ASSOCIATION OF EDMONTON. ALL RIGHTS RESERVED. Trademarks are owned or controlled by the Canadian Real Estate Association (CREA) and identify real estate professionals who are members of CREA (REALTOR®, REALTORS®) and/or the quality of services they provide (MLS®, Multiple Listing Service®)

Listing information last updated on June 23rd, 2025 at 3:47am MDT