

\$232,900 - 408 14810 51 Avenue, Edmonton

MLS® #E4443804

\$232,900

2 Bedroom, 2.00 Bathroom, 1,313 sqft

Condo / Townhouse on 0.00 Acres

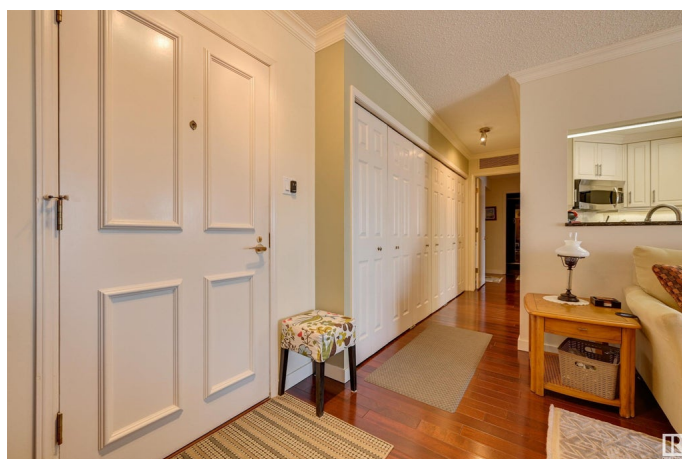
Brander Gardens, Edmonton, AB

Executive Condo in one of Edmonton's most sought after communities: Riverbend/Brander Gardens, close to all amenities and river valley trails. This luxurious, top-floor unit has an open concept living room, dining room, chefs kitchen and second bedroom/den/office. Enjoy the Brazilian hardwood, high-end stainless steel appliances, granite countertops, AC & a chromotherapy rain/steam shower. Massive, private deck overlooking greenspace and mature trees. The primary bedroom is HUGE with luxury ensuite/walk in closet. NEW furnace (2023). Building is exceptionally well managed & offers stunning amenities (HUGE indoor pool, hot tub, exercise area, courtyard) and underground heated parking (2 stalls) with storage. TONS of visitor parking. Condo fees include ALL utilities!

Built in 1976

Essential Information

MLS® #	E4443804
Price	\$232,900
Bedrooms	2
Bathrooms	2.00
Full Baths	2
Square Footage	1,313
Acres	0.00
Year Built	1976



Type	Condo / Townhouse
Sub-Type	Lowrise Apartment
Style	Single Level Apartment
Status	Active

Community Information

Address	408 14810 51 Avenue
Area	Edmonton
Subdivision	Brander Gardens
City	Edmonton
County	ALBERTA
Province	AB
Postal Code	T6H 5G5

Amenities

Amenities	Air Conditioner, Exercise Room, Hot Tub, Parking-Visitor, Patio, Pool-Indoor, See Remarks
Parking	Heated, Underground
Has Pool	Yes

Interior

Interior Features	ensuite bathroom
Appliances	Air Conditioning-Central, Compactor, Dishwasher-Built-In, Dryer, Microwave Hood Fan, Refrigerator, Stove-Electric, Washer
Heating	Forced Air-1, Natural Gas
# of Stories	4
Stories	1
Has Basement	Yes
Basement	None, No Basement

Exterior

Exterior	Wood, Brick, Stucco, Vinyl
Exterior Features	Golf Nearby, Picnic Area, Playground Nearby, Public Transportation, Schools, Shopping Nearby, Ski Hill Nearby
Roof	EPDM Membrane
Construction	Wood, Brick, Stucco, Vinyl
Foundation	Concrete Perimeter

Additional Information

Date Listed	June 22nd, 2025
-------------	-----------------

Days on Market	21
Zoning	Zone 14
Condo Fee	\$1,203

DATA IS DEEMED RELIABLE BUT IS NOT GUARANTEED ACCURATE BY THE REALTORS® ASSOCIATION OF EDMONTON. COPYRIGHT 2025 BY THE REALTORS® ASSOCIATION OF EDMONTON. ALL RIGHTS RESERVED. Trademarks are owned or controlled by the Canadian Real Estate Association (CREA) and identify real estate professionals who are members of CREA (REALTOR®, REALTORS®) and/or the quality of services they provide (MLS®, Multiple Listing Service®)

Listing information last updated on July 13th, 2025 at 12:47pm MDT