

Courtesy Of David C St. Jean Of Exp Realty

\$589,999 - 31 Deer Ridge Drive, St. Albert

MLS® #E4444185

\$589,999

5 Bedroom, 3.50 Bathroom, 1,808 sqft

Single Family on 0.00 Acres

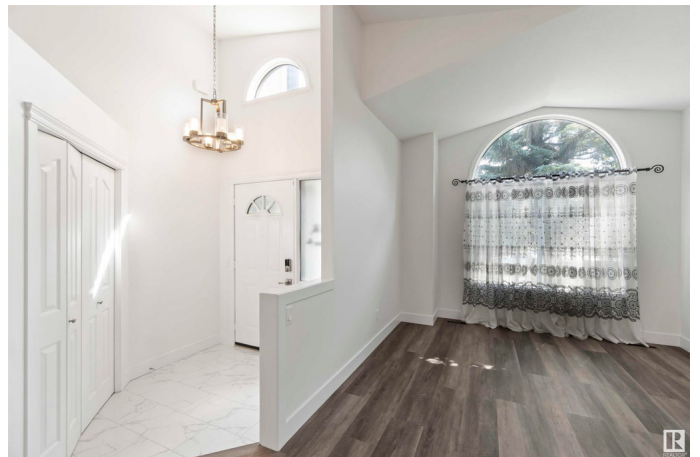
Deer Ridge (St. Albert), St. Albert, AB

NEWLY RENOVATED FROM TOP TO BOTTOM! Welcome to this beautiful 5 bed, 3.5 bath home nestled in the family-friendly Deer Ridge. The main floor boasts vaulted ceilings, a spacious living and family room with a cozy wood-burning fireplace, and a stylish kitchen with stainless steel appliances, tile backsplash, and a corner pantry. Upstairs you'll find a generous primary suite with a 4pc ensuite and walk-in closet, plus two additional bedrooms and a 4pc bath. The fully finished basement offers two more bedrooms, a 3pc bath, a large open recreation area, and ample storage. Luxury vinyl plank and tile flooring flow throughout. Enjoy outdoor living on the double-tiered deck overlooking a massive backyard—perfect for entertaining or relaxing with family and friends. The heated, insulated double attached garage adds convenience. Located near schools, parks, shopping, and walking trails, with quick access to Ray Gibbon Dr, Anthony Henday, and St. Albert Trail for an easy commute. All this home needs is YOU!

Built in 1992

Essential Information

| | |
|----------|-----------|
| MLS® # | E4444185 |
| Price | \$589,999 |
| Bedrooms | 5 |



| | |
|----------------|------------------------|
| Bathrooms | 3.50 |
| Full Baths | 3 |
| Half Baths | 1 |
| Square Footage | 1,808 |
| Acres | 0.00 |
| Year Built | 1992 |
| Type | Single Family |
| Sub-Type | Detached Single Family |
| Style | 2 Storey |
| Status | Active |

Community Information

| | |
|-------------|-------------------------|
| Address | 31 Deer Ridge Drive |
| Area | St. Albert |
| Subdivision | Deer Ridge (St. Albert) |
| City | St. Albert |
| County | ALBERTA |
| Province | AB |
| Postal Code | T8N 5Y9 |

Amenities

| | |
|----------------|---|
| Amenities | Closet Organizers, Deck, Vaulted Ceiling |
| Parking Spaces | 4 |
| Parking | Double Garage Attached, Heated, Insulated |

Interior

| | |
|-------------------|--|
| Interior Features | ensuite bathroom |
| Appliances | Dishwasher-Built-In, Dryer, Garage Control, Garage Opener, Hood Fan, Refrigerator, Storage Shed, Stove-Electric, Washer, Window Coverings, Garage Heater |
| Heating | Forced Air-1, Natural Gas |
| Fireplace | Yes |
| Fireplaces | Mantel |
| Stories | 3 |
| Has Basement | Yes |
| Basement | Full, Finished |

Exterior

| | |
|----------|--------------|
| Exterior | Wood, Stucco |
|----------|--------------|

| | |
|-------------------|---|
| Exterior Features | Fenced, Flat Site, Landscaped, Level Land, Playground Nearby, Public Transportation, Schools, Shopping Nearby |
| Roof | Asphalt Shingles |
| Construction | Wood, Stucco |
| Foundation | Concrete Perimeter |

School Information

| | |
|------------|----------------------------|
| Elementary | Muriel Martin Elementary S |
| Middle | William D Cuts School |
| High | Bellerose Composite High S |

Additional Information

| | |
|----------------|-----------------|
| Date Listed | June 25th, 2025 |
| Days on Market | 84 |
| Zoning | Zone 24 |

DATA IS DEEMED RELIABLE BUT IS NOT GUARANTEED ACCURATE BY THE REALTORS® ASSOCIATION OF EDMONTON. COPYRIGHT 2025 BY THE REALTORS® ASSOCIATION OF EDMONTON. ALL RIGHTS RESERVED. Trademarks are owned or controlled by the Canadian Real Estate Association (CREA) and identify real estate professionals who are members of CREA (REALTOR®, REALTORS®) and/or the quality of services they provide (MLS®, Multiple Listing Service®)

Listing information last updated on September 17th, 2025 at 6:17am MDT