

\$499,900 - 7 Lamplight Cove, Spruce Grove

MLS® #E4444191

\$499,900

4 Bedroom, 3.50 Bathroom, 1,831 sqft

Single Family on 0.00 Acres

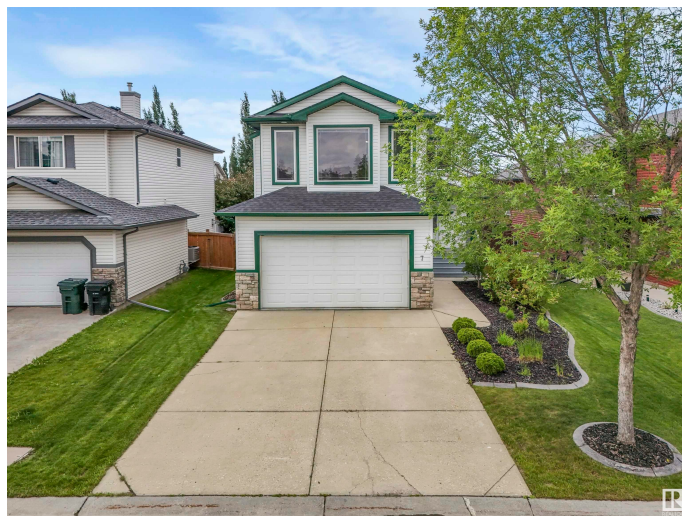
Legacy Park, Spruce Grove, AB

Welcome to 7 Lamplight Cove! This 4-bedroom, 3.5-bath home in Spruce Grove delivers over 2,500 sq ft of total living space and excellent proximity to daily amenities. The main floor features a bright, open layout with a gas fireplace and built-in cabinetry in the living room, plus a convenient 2 pc bathroom. The kitchen offers a walk-in pantry and an island with room for additional seating. Upstairs youâ€™ll find a spacious family room, laundry, and 3 bedrooms â€“ including a large primary bedroom with a walk-in closet and a 4 pc ensuite. The basement is fully finished with a fourth bedroom, 3 pc bath, and versatile rec space. Outside, enjoy a fully fenced yard with covered deck and storage shed. Located within walking distance to groceries and just a 5-minute drive to Westland Market Mall, this home offers comfort, space, and convenience in one of Spruce Groveâ€™s most accessible neighbourhoods.

Built in 2005

Essential Information

MLS® #	E4444191
Price	\$499,900
Bedrooms	4
Bathrooms	3.50
Full Baths	3



Half Baths	1
Square Footage	1,831
Acres	0.00
Year Built	2005
Type	Single Family
Sub-Type	Detached Single Family
Style	2 Storey
Status	Active

Community Information

Address	7 Lamplight Cove
Area	Spruce Grove
Subdivision	Legacy Park
City	Spruce Grove
County	ALBERTA
Province	AB
Postal Code	T7X 4R2

Amenities

Amenities	Off Street Parking, Air Conditioner, Deck
Parking Spaces	5
Parking	Double Garage Attached, Front Drive Access

Interior

Interior Features	ensuite bathroom
Appliances	Dishwasher-Built-In, Dryer, Hood Fan, Refrigerator, Stove-Electric, Washer, Window Coverings
Heating	Forced Air-1, Natural Gas
Fireplace	Yes
Fireplaces	Tile Surround
Stories	3
Has Basement	Yes
Basement	Full, Finished

Exterior

Exterior	Wood, Vinyl
Exterior Features	Fenced, Golf Nearby, No Back Lane, Shopping Nearby
Roof	Asphalt Shingles
Construction	Wood, Vinyl

Foundation Concrete Perimeter

School Information

Elementary Copperhaven School
Middle Copperhaven School
High Spruce Grove Composite

Additional Information

Date Listed June 25th, 2025
Days on Market 4
Zoning Zone 91

DATA IS DEEMED RELIABLE BUT IS NOT GUARANTEED ACCURATE BY THE REALTORS® ASSOCIATION OF EDMONTON. COPYRIGHT 2025 BY THE REALTORS® ASSOCIATION OF EDMONTON. ALL RIGHTS RESERVED.Trademarks are owned or controlled by the Canadian Real Estate Association (CREA) and identify real estate professionals who are members of CREA (REALTOR®, REALTORS®) and/or the quality of services they provide (MLS®, Multiple Listing Service®)
Listing information last updated on June 29th, 2025 at 4:32pm MDT