

\$795,000 - 451 22559 Wye Road, Rural Strathcona County

MLS® #E4445370

\$795,000

3 Bedroom, 1.00 Bathroom, 1,053 sqft

Rural on 2.99 Acres

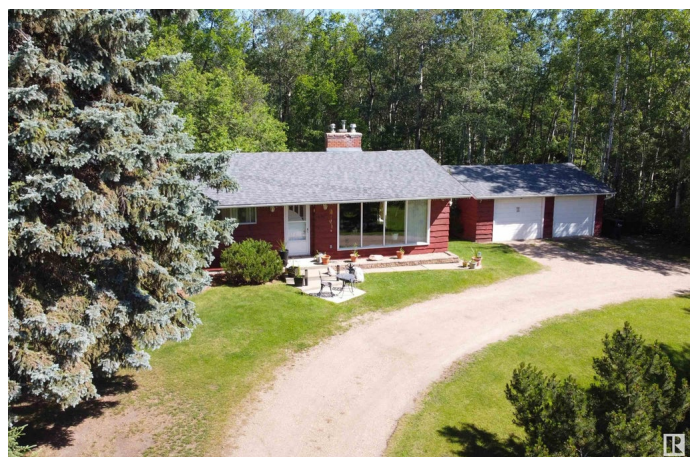
Bailey's Subdivision, Rural Strathcona County, AB

PRIME LOCATION AND VALUE!!! This lovely bungalow is situated on 2.99 ACRES in Bailey's subdivision. Only 2 minutes from Sherwood Park!! Easy double access driveway to the property. Spacious and bright living room with hardwood floors and cozy brick-featured gas fireplace. Lovely kitchen with an open dining area. There are 3 bedrooms on the main plus a 4 piece bathroom. The FULLY FINISHED basement offers a Rec Room and utility/laundry room plus storage space. Double detached garage, 2000 gallon cistern and septic is tank and straight discharge. Beautifully treed walking trails and a MASSIVE BACKYARD with tons of room to enjoy the peace and tranquility. An amazing opportunity for those who want affordable acreage living and super close to town!!! Visit REALTOR® website for more information.

Built in 1958

Essential Information

MLS® #	E4445370
Price	\$795,000
Bedrooms	3
Bathrooms	1.00



Full Baths	1
Square Footage	1,053
Acres	2.99
Year Built	1958
Type	Rural
Sub-Type	Detached Single Family
Style	Bungalow
Status	Active

Community Information

Address	451 22559 Wye Road
Area	Rural Strathcona County
Subdivision	Bailey's Subdivision
City	Rural Strathcona County
County	ALBERTA
Province	AB
Postal Code	T8C 1H9

Amenities

Features	Fire Pit, Patio
----------	-----------------

Interior

Heating	Forced Air-1, Natural Gas
Stories	2
Has Basement	Yes
Basement	Full, Finished

Exterior

Exterior	Wood
Exterior Features	Landscaped, Private Setting, Treed Lot
Construction	Wood
Foundation	Concrete Perimeter

Additional Information

Date Listed	July 2nd, 2025
Days on Market	67
Zoning	Zone 80

DATA IS DEEMED RELIABLE BUT IS NOT GUARANTEED ACCURATE BY THE REALTORS® ASSOCIATION OF EDMONTON. COPYRIGHT 2025 BY THE REALTORS® ASSOCIATION OF EDMONTON. ALL RIGHTS RESERVED. Trademarks are owned or controlled by the Canadian Real Estate Association (CREA) and identify real

estate professionals who are members of CREA (REALTOR®®, REALTORS®®) and/or the quality of services they provide (MLS®®, Multiple Listing Service®®)

Listing information last updated on September 7th, 2025 at 12:47pm MDT