

\$545,000 - 20027 26 Avenue, Edmonton

MLS® #E4445659

\$545,000

3 Bedroom, 2.50 Bathroom, 1,884 sqft

Single Family on 0.00 Acres

The Uplands, Edmonton, AB

A beautiful 2 storey home built by Coventry, offers a total of 3 bedrooms & 2.5 bathrooms and is located in the community of the Uplands. The entrance leads you to the open concept layout main floor with 9'™ ceiling. The beautifully designed kitchen features ceramic tile backsplash, stainless steel appliances, quartz counter tops, bright white cabinets and a pantry. The living room is spacious and includes an electric fireplace and large window facing the backyard that brings in lots of natural daylight. Sliding door leads out to a large composite deck and landscaped & fenced yard. The main level is completed by a 2 pc bathroom. Upstairs the primary bedroom includes a 4 piece ensuite with double sinks and a walk-in closet and custom wardrobe. An additional 2 bedrooms (1 with a walk-in closet) and a bonus room complete the upstairs. Double attached garage that leads into a cul-de-sac. Close to schools, playgrounds, ravines, Anthony Henday, amenities and public transportation.

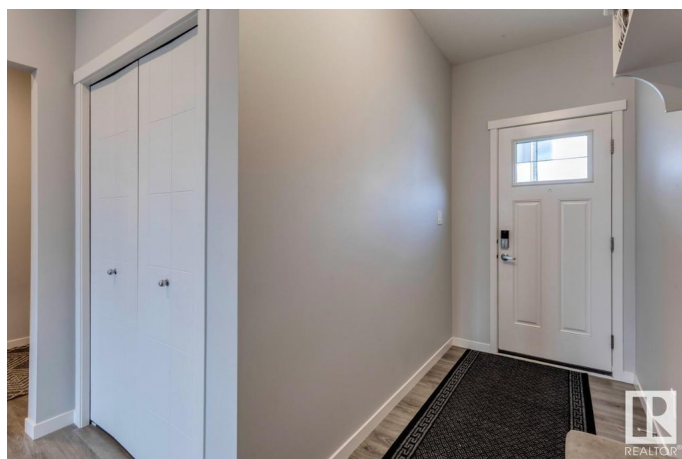
Built in 2020

Essential Information

MLS® # E4445659

Price \$545,000

Bedrooms 3



Bathrooms	2.50
Full Baths	2
Half Baths	1
Square Footage	1,884
Acres	0.00
Year Built	2020
Type	Single Family
Sub-Type	Detached Single Family
Style	2 Storey
Status	Active

Community Information

Address	20027 26 Avenue
Area	Edmonton
Subdivision	The Uplands
City	Edmonton
County	ALBERTA
Province	AB
Postal Code	T6M 1K3

Amenities

Amenities	No Smoking Home, See Remarks
Parking Spaces	4
Parking	Double Garage Attached

Interior

Interior Features	ensuite bathroom
Appliances	Air Conditioning-Central, Dishwasher-Built-In, Dryer, Oven-Microwave, Refrigerator, Stove-Electric, Washer
Heating	Forced Air-1, Natural Gas
Fireplace	Yes
Fireplaces	Mantel
Stories	2
Has Basement	Yes
Basement	Full, Unfinished

Exterior

Exterior	Wood, Stone, Vinyl
Exterior Features	Park/Reserve, Playground Nearby

Roof	Asphalt Shingles
Construction	Wood, Stone, Vinyl
Foundation	Concrete Perimeter

Additional Information

Date Listed	July 2nd, 2025
Days on Market	14
Zoning	Zone 57

DATA IS DEEMED RELIABLE BUT IS NOT GUARANTEED ACCURATE BY THE REALTORS® ASSOCIATION OF EDMONTON. COPYRIGHT 2025 BY THE REALTORS® ASSOCIATION OF EDMONTON. ALL RIGHTS RESERVED.Trademarks are owned or controlled by the Canadian Real Estate Association (CREA) and identify real estate professionals who are members of CREA (REALTOR®, REALTORS®) and/or the quality of services they provide (MLS®, Multiple Listing Service®)

Listing information last updated on July 15th, 2025 at 9:31pm MDT