

\$254,800 - 450 11517 Ellerslie Road, Edmonton

MLS® #E4445906

\$254,800

2 Bedroom, 2.00 Bathroom, 876 sqft

Condo / Townhouse on 0.00 Acres

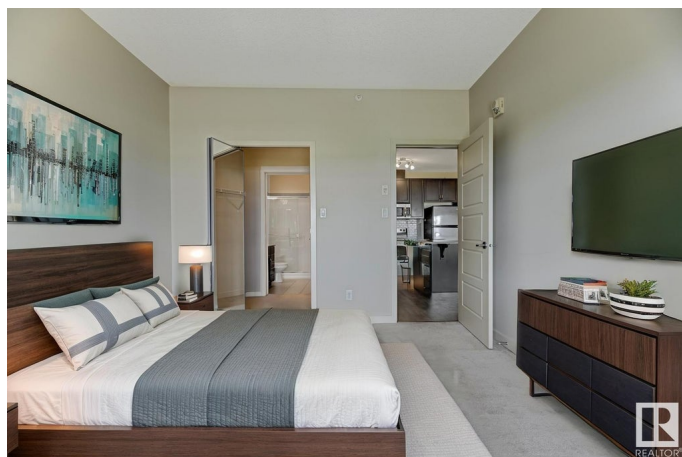
Rutherford (Edmonton), Edmonton, AB

Enjoy downtown views and effortless living in this Top Floor 876 sq ft condo with 9 ft. ceilings at Rutherford Gate! Featuring 2 bedrooms and 2 full baths, this bright and freshly painted unit offers an open-concept layout with a stylish kitchen, stainless steel appliances, ample cabinetry, and durable laminate flooring throughout. The spacious primary bedroom includes a walk-through closet and private ensuite, while the second bedroom is perfect for guests or a home office. Additional perks include in-suite laundry, titled underground parking with a secure storage cage, plus building amenities like a social room, fitness centre, guest suite, and visitor parking. Well-managed complex in a prime location close to Anthony Henday, South Edmonton Common, and within walking distance to transit, banks, shopping, and coffee shops. A perfect blend of comfort, quality, and convenience. Don't miss out on this fantastic home!

Built in 2011

Essential Information

MLS® #	E4445906
Price	\$254,800
Bedrooms	2
Bathrooms	2.00



Full Baths	2
Square Footage	876
Acres	0.00
Year Built	2011
Type	Condo / Townhouse
Sub-Type	Lowrise Apartment
Style	Multi Level Apartment
Status	Active

Community Information

Address	450 11517 Ellerslie Road
Area	Edmonton
Subdivision	Rutherford (Edmonton)
City	Edmonton
County	ALBERTA
Province	AB
Postal Code	T6W 2A9

Amenities

Amenities	Ceiling 9 ft., Exercise Room, Guest Suite, Social Rooms
Parking Spaces	1
Parking	Underground

Interior

Interior Features	ensuite bathroom
Appliances	Dishwasher-Built-In, Dryer, Refrigerator, Stove-Electric, Washer, Window Coverings
Heating	Hot Water, Natural Gas
# of Stories	4
Stories	1
Has Basement	Yes
Basement	None, See Remarks

Exterior

Exterior	Wood, Stone, Vinyl
Exterior Features	Airport Nearby, Golf Nearby, Public Transportation, Schools, Shopping Nearby
Roof	See Remarks
Construction	Wood, Stone, Vinyl

Foundation Concrete Perimeter

Additional Information

Date Listed July 4th, 2025
Days on Market 68
Zoning Zone 55
Condo Fee \$513

DATA IS DEEMED RELIABLE BUT IS NOT GUARANTEED ACCURATE BY THE REALTORS® ASSOCIATION OF EDMONTON. COPYRIGHT 2025 BY THE REALTORS® ASSOCIATION OF EDMONTON. ALL RIGHTS RESERVED.Trademarks are owned or controlled by the Canadian Real Estate Association (CREA) and identify real estate professionals who are members of CREA (REALTOR®, REALTORS®) and/or the quality of services they provide (MLS®, Multiple Listing Service®)
Listing information last updated on September 10th, 2025 at 12:17am MDT