

\$215,000 - 1106 8315 105 Street, Edmonton

MLS® #E4446227

\$215,000

1 Bedroom, 1.00 Bathroom, 717 sqft

Condo / Townhouse on 0.00 Acres

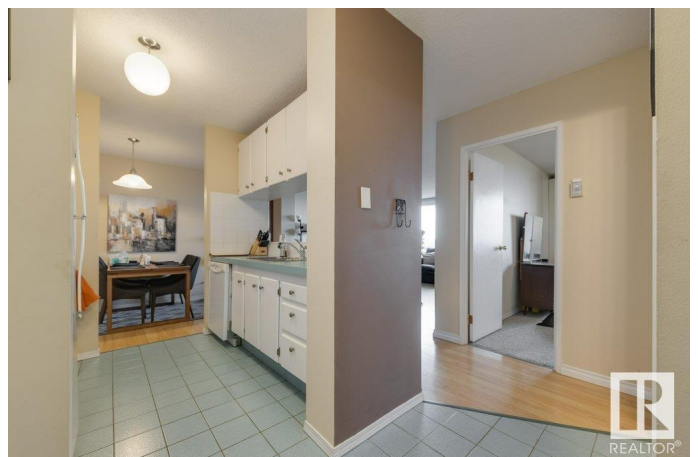
Strathcona, Edmonton, AB

Welcome to Heritage House in beautiful Strathcona! All utilities included in this 1 bed/1 bath 11th floor condo with underground parking and stunning panoramic downtown views. This property is close to the University, Whyte Avenue, shopping, schools, parks, downtown, walking trails, public transportation- perfect for students and those wanting an urban lifestyle. Full of natural light, the condo features a spacious open concept living room/ dining room, functional galley kitchen w/ dishwasher and garburator, large bright bedroom and 4 pc bath. Other features include a huge north facing balcony, in-suite storage, laundry room on each building floor, rooftop deck with BBQ area, exercise space, and 1 stall- underground parking.

Built in 1969

Essential Information

MLS® #	E4446227
Price	\$215,000
Bedrooms	1
Bathrooms	1.00
Full Baths	1
Square Footage	717
Acres	0.00
Year Built	1969



Type	Condo / Townhouse
Sub-Type	Apartment High Rise
Style	Single Level Apartment
Status	Active

Community Information

Address	1106 8315 105 Street
Area	Edmonton
Subdivision	Strathcona
City	Edmonton
County	ALBERTA
Province	AB
Postal Code	T6E 4H4

Amenities

Amenities	On Street Parking, Exercise Room, Parking-Visitor, Recreation Room/Centre
Parking Spaces	1
Parking	Underground

Interior

Appliances	Dishwasher-Built-In, Garburator, Hood Fan, Refrigerator, Stove-Electric
Heating	Forced Air-1, Natural Gas
# of Stories	14
Stories	1
Has Basement	Yes
Basement	None, No Basement

Exterior

Exterior	Concrete
Exterior Features	Public Transportation, Shopping Nearby, View City, View Downtown
Roof	Roll Roofing
Construction	Concrete
Foundation	Concrete Perimeter

Additional Information

Date Listed	July 5th, 2025
Days on Market	8
Zoning	Zone 15

Condo Fee \$479

DATA IS DEEMED RELIABLE BUT IS NOT GUARANTEED ACCURATE BY THE REALTORS® ASSOCIATION OF EDMONTON. COPYRIGHT 2025 BY THE REALTORS® ASSOCIATION OF EDMONTON. ALL RIGHTS RESERVED.Trademarks are owned or controlled by the Canadian Real Estate Association (CREA) and identify real estate professionals who are members of CREA (REALTOR®, REALTORS®) and/or the quality of services they provide (MLS®, Multiple Listing Service®)
Listing information last updated on July 13th, 2025 at 6:32pm MDT