

## \$599,900 - 500 47427 Rge Road 14, Rural Leduc County

MLS® #E4446345

**\$599,900**

3 Bedroom, 2.50 Bathroom, 1,462 sqft

Rural on 2.87 Acres

Kerr Cape Estates Phase 2, Rural Leduc County, AB

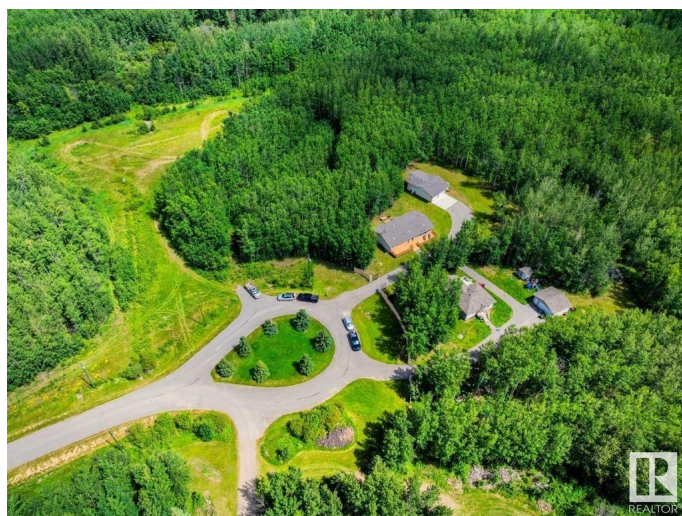
Your Perfect Pigeon Lake Escape! Discover this private three-acre gem tucked just minutes from the sparkling shores of Pigeon Lake â€” Central Albertaâ€™s year-round playground. This well-treed property offers the perfect balance of open space and privacy, with plenty of room to relax, play, and enjoy lake country living at its best. Bring your toys â€” thereâ€™s ample space for RV parking and all your lake gear, plus a generous 26â€™ x 36â€™ detached garage to store your boat, quads, or keep your vehicles protected year-round. Spend warm summer days boating, fishing, swimming, and exploring the charming nearby communities of Ma-Me-O Beach, Mulhurst Bay, and the Village at Pigeon Lake, where youâ€™ll find golf, local shops, dining, and community events. When winter arrives, hit the cross-country ski trails, ice fishing spots, or cozy up by the fire after a day of snowy adventure. Spend warm summer days boating, fishing, swimming, and exploring the charming nearby communities.

Built in 1985

### Essential Information

MLS® # E4446345

Price \$599,900



Bedrooms	3
Bathrooms	2.50
Full Baths	2
Half Baths	1
Square Footage	1,462
Acres	2.87
Year Built	1985
Type	Rural
Sub-Type	Detached Single Family
Style	Bungalow
Status	Active

### Community Information

Address	500 47427 Rge Road 14
Area	Rural Leduc County
Subdivision	Kerr Cape Estates Phase 2
City	Rural Leduc County
County	ALBERTA
Province	AB
Postal Code	T0C 2C0

### Amenities

Features	Air Conditioner, Bar, Deck, Exterior Walls- 2"x6", Front Porch, R.V. Storage, Wet Bar
----------	---

### Interior

Interior Features	ensuite bathroom
Heating	Forced Air-1, Natural Gas
Fireplace	Yes
Stories	2
Has Basement	Yes
Basement	Full, Finished

### Exterior

Exterior	Wood
Exterior Features	Backs Onto Park/Trees, Cul-De-Sac, Landscaped, Park/Reserve, Paved Lane, Private Setting, Treed Lot, See Remarks, Partially Fenced
Construction	Wood
Foundation	Brick

**Additional Information**

Date Listed                July 4th, 2025  
Days on Market        25  
Zoning                    Zone 90

DATA IS DEEMED RELIABLE BUT IS NOT GUARANTEED ACCURATE BY THE REALTORS® ASSOCIATION OF EDMONTON. COPYRIGHT 2025 BY THE REALTORS® ASSOCIATION OF EDMONTON. ALL RIGHTS RESERVED.Trademarks are owned or controlled by the Canadian Real Estate Association (CREA) and identify real estate professionals who are members of CREA (REALTOR®, REALTORS®) and/or the quality of services they provide (MLS®, Multiple Listing Service®)  
Listing information last updated on July 29th, 2025 at 4:47pm MDT