

Courtesy Of Tracy Candray Of Exp Realty

\$255,000 - 5216 146 Avenue, Edmonton

MLS® #E4448082

\$255,000

3 Bedroom, 1.50 Bathroom, 1,122 sqft

Condo / Townhouse on 0.00 Acres

Casselman, Edmonton, AB

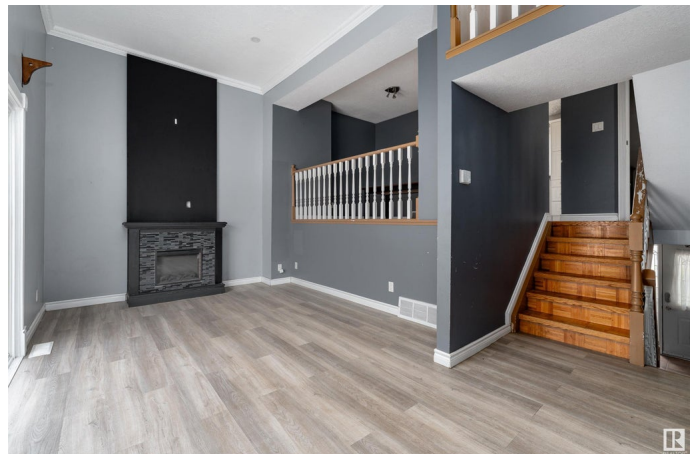
Welcome to this spacious 1,122 sq. ft. home, featuring 3 bedrooms and 1.5 bathrooms, nestled in the desirable neighborhood of Casselman. This home boasts a kitchen with ample storage and granite countertops, ideal for those who love to cook and entertain. Upstairs, three cozy bedrooms with a beautifully designed bathroom, complete with a relaxing jetted tub for ultimate comfort. This home is equipped with central air conditioning to keep you comfortable year-round. Step outside into the huge fenced backyard, perfect for enjoying the outdoors in privacy. The home includes a single attached garage, offering plenty of storage space or shelter for your vehicle. Recent upgrades include brand-new shingles (2024), a 4-month-old dishwasher and a stove and microwave both less than a year old. Conveniently located near playgrounds, bus stops, schools, and grocery stores, this home offers both tranquility and accessibility for your everyday needs. Donâ€™t miss out on this fantastic opportunity to own this lovely home!

Built in 1977

Essential Information

MLS® # E4448082

Price \$255,000



| | |
|----------------|-------------------|
| Bedrooms | 3 |
| Bathrooms | 1.50 |
| Full Baths | 1 |
| Half Baths | 1 |
| Square Footage | 1,122 |
| Acres | 0.00 |
| Year Built | 1977 |
| Type | Condo / Townhouse |
| Sub-Type | Townhouse |
| Style | 4 Level Split |
| Status | Active |

Community Information

| | |
|-------------|-----------------|
| Address | 5216 146 Avenue |
| Area | Edmonton |
| Subdivision | Casselman |
| City | Edmonton |
| County | ALBERTA |
| Province | AB |
| Postal Code | T5A 2L6 |

Amenities

| | |
|-----------|---------------------------------|
| Amenities | Air Conditioner, Ceiling 10 ft. |
| Parking | Single Garage Attached, Stall |

Interior

| | |
|--------------|---|
| Appliances | Air Conditioning-Central, Dishwasher-Built-In, Dryer, Garage Control, Refrigerator, Stove-Countertop Electric, Washer |
| Heating | Forced Air-1, Natural Gas |
| Fireplace | Yes |
| Fireplaces | Wall Mount |
| Stories | 4 |
| Has Basement | Yes |
| Basement | Full, Finished |

Exterior

| | |
|-------------------|---|
| Exterior | Wood, Brick, Vinyl |
| Exterior Features | Backs Onto Park/Trees, Fenced, Landscaped, Low Maintenance Landscape, No Back Lane, Playground Nearby, Public Transportation, |

Schools, Shopping Nearby, Ski Hill Nearby

| | |
|--------------|--------------------|
| Roof | Asphalt Shingles |
| Construction | Wood, Brick, Vinyl |
| Foundation | Concrete Perimeter |

School Information

| | |
|------------|-----------------------|
| Elementary | McLeod School |
| Middle | Steele Heights School |
| High | M.E. LaZerte School |

Additional Information

| | |
|----------------|-----------------|
| Date Listed | July 15th, 2025 |
| Days on Market | 2 |
| Zoning | Zone 02 |
| Condo Fee | \$324 |

DATA IS DEEMED RELIABLE BUT IS NOT GUARANTEED ACCURATE BY THE REALTORS® ASSOCIATION OF EDMONTON. COPYRIGHT 2025 BY THE REALTORS® ASSOCIATION OF EDMONTON. ALL RIGHTS RESERVED. Trademarks are owned or controlled by the Canadian Real Estate Association (CREA) and identify real estate professionals who are members of CREA (REALTOR®, REALTORS®) and/or the quality of services they provide (MLS®, Multiple Listing Service®)

Listing information last updated on July 17th, 2025 at 8:02pm MDT