

\$809,000 - 7041 Kiviaq Crescent, Edmonton

MLS® #E4448547

\$809,000

4 Bedroom, 3.00 Bathroom, 2,368 sqft
Single Family on 0.00 Acres

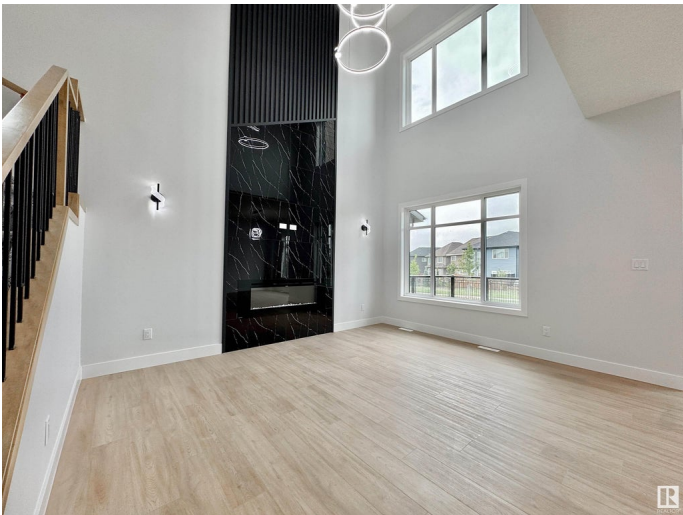
Keswick Area, Edmonton, AB

Introducing an unparalleled masterpiece of modern design, nestled in the exclusive southwest Edmonton neighborhood of Keswick. Backing on to a walkway. This stunning 5 bedroom, 3 full bathroom brand-new construction home is a testament to the exceptional craftsmanship of one of Edmonton's top-notch builders. Open-concept living room, featuring soaring ceilings that stretch up to the second floor. Perfect for entertaining, this expansive space seamlessly blends the living, dining, spice kitchen and main kitchen areas. You'll discover an array of upscale finishes, including premium materials, sleek designs, and meticulous attention to detail. From the gourmet kitchen to the spa-inspired bathrooms, every aspect of this home exudes luxury and sophistication. Come, See, Believe

Built in 2025

Essential Information

| | |
|----------------|-----------|
| MLS® # | E4448547 |
| Price | \$809,000 |
| Bedrooms | 4 |
| Bathrooms | 3.00 |
| Full Baths | 3 |
| Square Footage | 2,368 |
| Acres | 0.00 |



| | |
|------------|------------------------|
| Year Built | 2025 |
| Type | Single Family |
| Sub-Type | Detached Single Family |
| Style | 2 Storey |
| Status | Active |

Community Information

| | |
|-------------|----------------------|
| Address | 7041 Kiviaq Crescent |
| Area | Edmonton |
| Subdivision | Keswick Area |
| City | Edmonton |
| County | ALBERTA |
| Province | AB |
| Postal Code | T6W 5R2 |

Amenities

| | |
|-----------|------------------------|
| Amenities | See Remarks |
| Parking | Double Garage Attached |

Interior

| | |
|-------------------|--|
| Interior Features | ensuite bathroom |
| Appliances | See Remarks |
| Heating | Forced Air-1, Natural Gas |
| Fireplace | Yes |
| Fireplaces | Heatilator/Fan, Remote Control, Wall Mount |
| Stories | 2 |
| Has Basement | Yes |
| Basement | Full, Unfinished |

Exterior

| | |
|-------------------|----------------------------------|
| Exterior | Wood, Fiber Cement, Stone, Vinyl |
| Exterior Features | See Remarks |
| Roof | Asphalt Shingles |
| Construction | Wood, Fiber Cement, Stone, Vinyl |
| Foundation | Concrete Perimeter |

Additional Information

| | |
|----------------|-----------------|
| Date Listed | July 18th, 2025 |
| Days on Market | 13 |

Zoning

Zone 56

DATA IS DEEMED RELIABLE BUT IS NOT GUARANTEED ACCURATE BY THE REALTORS® ASSOCIATION OF EDMONTON. COPYRIGHT 2025 BY THE REALTORS® ASSOCIATION OF EDMONTON. ALL RIGHTS RESERVED. Trademarks are owned or controlled by the Canadian Real Estate Association (CREA) and identify real estate professionals who are members of CREA (REALTOR®, REALTORS®) and/or the quality of services they provide (MLS®, Multiple Listing Service®)

Listing information last updated on July 31st, 2025 at 7:47am MDT