

\$589,000 - 84 Ridgpoint Way, Sherwood Park

MLS® #E4449437

\$589,000

4 Bedroom, 3.00 Bathroom, 1,202 sqft

Single Family on 0.00 Acres

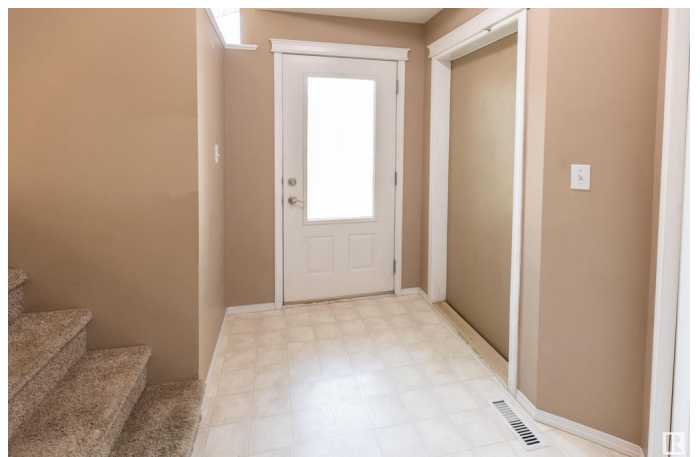
The Ridge (Sherwood Park), Sherwood Park, AB

Welcome to the Ridge in Sherwood Park and this 1,200 sqft fully finished bi-level. The main level features a kitchen with white cabinetry that opens to the breakfast nook, where patio doors lead to a deck overlooking the beautifully landscaped backyard with retaining wall and fire pit. Off the kitchen is a spacious family room, perfect for gatherings. Completing the main level is a 4pc main bathroom and 3 bedrooms, with the primary having a walk-in closet and 4pc ensuite. The fully developed lower level features a large family/rec area with a cozy gas fireplace, an additional bedroom, 4pc bathroom, and laundry room. This home is well cared for and move-in-ready.

Built in 2000

Essential Information

MLS® #	E4449437
Price	\$589,000
Bedrooms	4
Bathrooms	3.00
Full Baths	3
Square Footage	1,202
Acres	0.00
Year Built	2000
Type	Single Family



Sub-Type	Detached Single Family
Style	Bi-Level
Status	Active

Community Information

Address	84 Ridgepoint Way
Area	Sherwood Park
Subdivision	The Ridge (Sherwood Park)
City	Sherwood Park
County	ALBERTA
Province	AB
Postal Code	T8A 6B2

Amenities

Amenities	Deck, Fire Pit
Parking	Double Garage Attached

Interior

Interior Features	ensuite bathroom
Appliances	Dishwasher-Built-In, Dryer, Garage Control, Garage Opener, Oven-Microwave, Refrigerator, Stove-Electric, Washer, Window Coverings
Heating	Forced Air-1, Natural Gas
Fireplace	Yes
Fireplaces	Mantel, Tile Surround
Stories	2
Has Basement	Yes
Basement	Full, Finished

Exterior

Exterior	Wood, Vinyl
Exterior Features	Cul-De-Sac, Fenced, Landscaped
Roof	Asphalt Shingles
Construction	Wood, Vinyl
Foundation	Concrete Perimeter

School Information

Elementary	Brentwood
Middle	F.R. Haythorne

High Bev Facey

Additional Information

Date Listed July 24th, 2025
Days on Market 7
Zoning Zone 25

DATA IS DEEMED RELIABLE BUT IS NOT GUARANTEED ACCURATE BY THE REALTORS® ASSOCIATION OF EDMONTON. COPYRIGHT 2025 BY THE REALTORS® ASSOCIATION OF EDMONTON. ALL RIGHTS RESERVED.Trademarks are owned or controlled by the Canadian Real Estate Association (CREA) and identify real estate professionals who are members of CREA (REALTOR®, REALTORS®) and/or the quality of services they provide (MLS®, Multiple Listing Service®)
Listing information last updated on July 31st, 2025 at 6:02am MDT