

\$200,000 - 412 812 Welsh Drive, Edmonton

MLS® #E4449658

\$200,000

1 Bedroom, 1.00 Bathroom, 682 sqft

Condo / Townhouse on 0.00 Acres

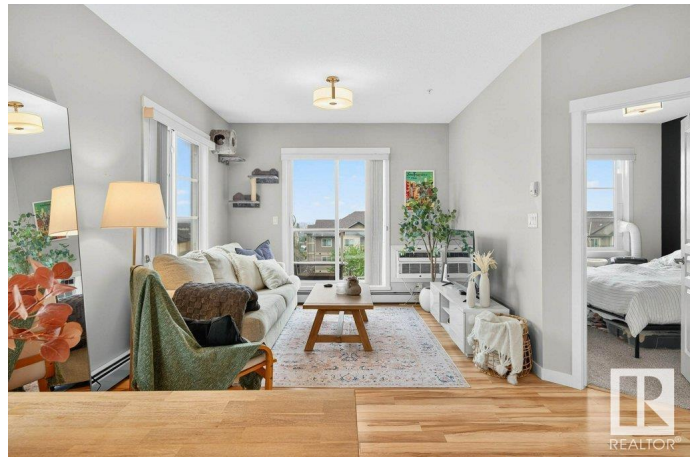
Walker, Edmonton, AB

Looking for a place that doesn't feel like a shoebox and won't roast you alive in summer? Welcome to your top-floor, corner-unit, air conditioned dream. This 1 bed / 1 bath beauty has 9' ceilings, a seriously nice kitchen with granite counters, soft-close drawers and stainless steel appliances. There's in-suite laundry with storage and a heated, titled underground parking stall. Oh, and the condo fees cover ALL your utilities—even electricity. Gas BBQ-ready balcony? Check. Extra windows pouring in natural light? Also check. Pet-friendly, trail-adjacent, and dangerously close to great shopping. It's modern, bright, and move-in ready—just like you.

Built in 2016

Essential Information

MLS® #	E4449658
Price	\$200,000
Bedrooms	1
Bathrooms	1.00
Full Baths	1
Square Footage	682
Acres	0.00
Year Built	2016
Type	Condo / Townhouse



Sub-Type	Lowrise Apartment
Style	Multi Level Apartment
Status	Active

Community Information

Address	412 812 Welsh Drive
Area	Edmonton
Subdivision	Walker
City	Edmonton
County	ALBERTA
Province	AB
Postal Code	T6X 1Y7

Amenities

Amenities	Air Conditioner, Ceiling 9 ft., No Smoking Home, Secured Parking
Parking	Underground

Interior

Appliances	Dishwasher-Built-In, Dryer, Garage Control, Microwave Hood Fan, Refrigerator, Stove-Electric, Washer, Window Coverings
Heating	Baseboard, Natural Gas
# of Stories	4
Stories	1
Has Basement	Yes
Basement	None, No Basement

Exterior

Exterior	Wood, Vinyl
Exterior Features	Airport Nearby, Low Maintenance Landscape, Playground Nearby, Public Transportation, Schools, Shopping Nearby
Roof	SBS Roofing System
Construction	Wood, Vinyl
Foundation	Slab

Additional Information

Date Listed	July 25th, 2025
Days on Market	4
Zoning	Zone 53
Condo Fee	\$360

DATA IS DEEMED RELIABLE BUT IS NOT GUARANTEED ACCURATE BY THE REALTORS® ASSOCIATION OF EDMONTON. COPYRIGHT 2025 BY THE REALTORS® ASSOCIATION OF EDMONTON. ALL RIGHTS RESERVED.Trademarks are owned or controlled by the Canadian Real Estate Association (CREA) and identify real estate professionals who are members of CREA (REALTOR®, REALTORS®) and/or the quality of services they provide (MLS®, Multiple Listing Service®)

Listing information last updated on July 29th, 2025 at 8:47pm MDT