

# \$199,900 - 126 9080 25 Avenue, Edmonton

MLS® #E4452006

**\$199,900**

0 Bedroom, 0.00 Bathroom,  
Business on 0.00 Acres

Summerside, Edmonton, AB

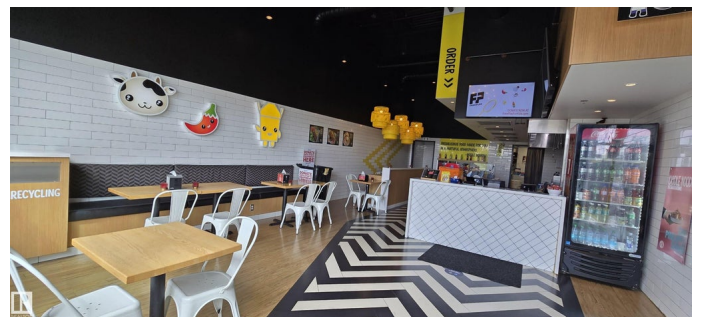
Excellent Opportunity to own Franchise Restaurant in Growing neighborhood of Edmonton SW. Take advantage of this turn-key, easy-to-operate restaurant located in one of the city's busy neighborhood of SW commercial center. Well maintained equipment and modern setup ready for your brand's expansion. This location presents a unique choice as in to continue operating as Oodle noodle franchise or bring your own concept to suit your business needs. Please do not approach staff regarding this listing.

## Essential Information

MLS® #	E4452006
Price	\$199,900
Bathrooms	0.00
Acres	0.00
Type	Business
Status	Active

## Community Information

Address	126 9080 25 Avenue
Area	Edmonton
Subdivision	Summerside
City	Edmonton
County	ALBERTA
Province	AB



Postal Code T6X 2H4

### **Additional Information**

Date Listed August 8th, 2025

Days on Market 42

Zoning Zone 53

DATA IS DEEMED RELIABLE BUT IS NOT GUARANTEED ACCURATE BY THE REALTORS® ASSOCIATION OF EDMONTON. COPYRIGHT 2025 BY THE REALTORS® ASSOCIATION OF EDMONTON. ALL RIGHTS RESERVED. Trademarks are owned or controlled by the Canadian Real Estate Association (CREA) and identify real estate professionals who are members of CREA (REALTOR®, REALTORS®) and/or the quality of services they provide (MLS®, Multiple Listing Service®)

Listing information last updated on September 18th, 2025 at 10:17pm MDT