

Courtesy Of Nooran Ostadeian Of RE/MAX Elite

# \$349,900 - 207 9739 92 Street, Edmonton

MLS® #E4452021

**\$349,900**

3 Bedroom, 2.00 Bathroom, 1,648 sqft  
Condo / Townhouse on 0.00 Acres

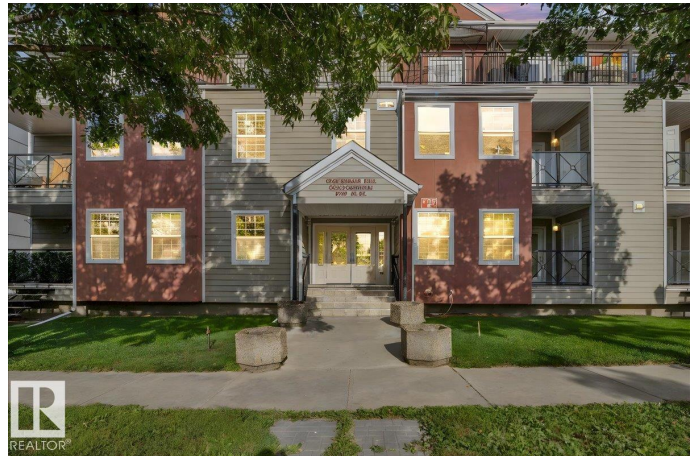
Cloverdale, Edmonton, AB

Youâ€™re not just buying a condoâ€”youâ€™re gaining a lifestyle. Picture evening hikes along the scenic river valley trails, weekends exploring the tropical gardens at the Muttart Conservatory, or enjoying the lively Folk Festival right outside your door. This address offers the perfect blend of urban comforts & natural beauty in the warm, welcoming Cloverdale community. This spacious 1679 sqft home features 3 bdrms & 3 balconies with beautiful views of the neighborhood. The primary bdrm boasts a lovely ensuite, large walk-in closet, abundant windows & a private balcony. The 2 additional bdrms are extra large & share their own balcony. The open concept living area has its own balcony, while the kitchen offers ample counter space, a center island with raised eating bar & plenty of cabinets. Youâ€™ll love the big laundry room & storage, a wide underground parking for 2 small cars. Condo fees include heat, water & central air.

Built in 2005

## Essential Information

MLS® #	E4452021
Price	\$349,900
Bedrooms	3
Bathrooms	2.00



Full Baths	2
Square Footage	1,648
Acres	0.00
Year Built	2005
Type	Condo / Townhouse
Sub-Type	Lowrise Apartment
Style	Single Level Apartment
Status	Active

### **Community Information**

Address	207 9739 92 Street
Area	Edmonton
Subdivision	Cloverdale
City	Edmonton
County	ALBERTA
Province	AB
Postal Code	T6C 3S3

### **Amenities**

Amenities	Air Conditioner, Deck, Parking-Visitor, Secured Parking, Security Door, Storage-In-Suite, Storage Cage
Parking	Parkade, Single Indoor, Underground

### **Interior**

Interior Features	ensuite bathroom
Appliances	Air Conditioning-Central, Dishwasher-Built-In, Dryer, Garburator, Microwave Hood Fan, Refrigerator, Stove-Electric, Washer
Heating	Hot Water, Natural Gas
# of Stories	3
Stories	3
Has Basement	Yes
Basement	None, No Basement

### **Exterior**

Exterior	Wood, Stucco, Vinyl
Exterior Features	Golf Nearby, Park/Reserve, Playground Nearby, Public Transportation, Ravine View, Schools, Shopping Nearby, Ski Hill Nearby, View Downtown
Roof	Tar & Gravel

Construction	Wood, Stucco, Vinyl
Foundation	Concrete Perimeter

### **School Information**

Elementary	Rutherford
Middle	Kenilworth
High	McNally

### **Additional Information**

Date Listed	August 8th, 2025
Days on Market	83
Zoning	Zone 18
Condo Fee	\$1,174

DATA IS DEEMED RELIABLE BUT IS NOT GUARANTEED ACCURATE BY THE REALTORS® ASSOCIATION OF EDMONTON. COPYRIGHT 2025 BY THE REALTORS® ASSOCIATION OF EDMONTON. ALL RIGHTS RESERVED. Trademarks are owned or controlled by the Canadian Real Estate Association (CREA) and identify real estate professionals who are members of CREA (REALTOR®, REALTORS®) and/or the quality of services they provide (MLS®, Multiple Listing Service®)

Listing information last updated on October 30th, 2025 at 12:47am MDT