

Courtesy Of Jason Kamal Of Exp Realty

## \$275,000 - 61 Mcleod Place, Edmonton

MLS® #E4454857

**\$275,000**

4 Bedroom, 1.50 Bathroom, 1,138 sqft  
Condo / Townhouse on 0.00 Acres

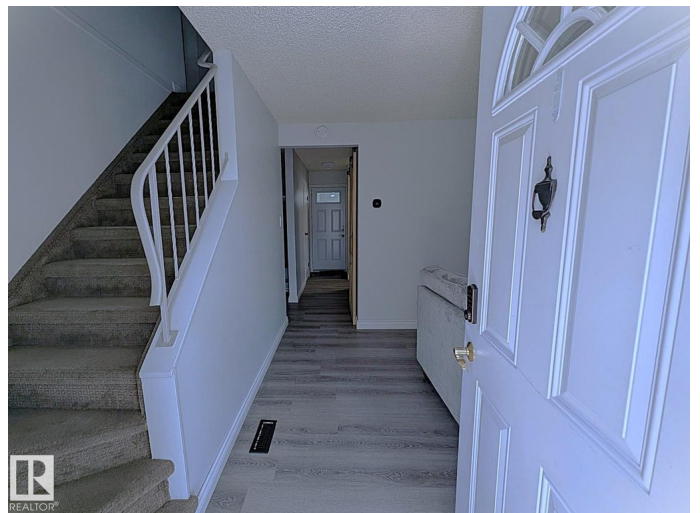
Casselman, Edmonton, AB

Welcome to your dream family home, designed for GROWING FAMILIES who need both SPACE AND VALUE. This is one of the largest units in the complex, offering FOUR BEDROOMS upstairs with two large enough for king-sized beds, giving everyone room to spread out. The main floor has a bright living room, open dining area, functional kitchen and a large storage pantry with barn door. Durable luxury vinyl plank flooring adds style and easy care. With two entrances, daily life is convenient for busy families. The finished basement offers flexible space for a play zone, sports den, or movie nights. Comfort comes with a HIGH-EFFICIENCY furnace, newer washer/dryer, TWO FRIDGES are included for meal prep. Outside, enjoy a private fenced yard backing green space, perfect for kids, pets, or BBQs. With a PET-FRIENDLY policy and NO BREED RESTRICTIONS, plus nearby schools, parks, trails, shopping, and quick access to the Henday. This affordable gem delivers space, convenience, LOW CONDO FEES and value without compromise.

Built in 1975

### Essential Information

MLS® #	E4454857
Price	\$275,000



Bedrooms	4
Bathrooms	1.50
Full Baths	1
Half Baths	1
Square Footage	1,138
Acres	0.00
Year Built	1975
Type	Condo / Townhouse
Sub-Type	Townhouse
Style	2 Storey
Status	Active

### **Community Information**

Address	61 Mcleod Place
Area	Edmonton
Subdivision	Casselman
City	Edmonton
County	ALBERTA
Province	AB
Postal Code	T5A 3A8

### **Amenities**

Amenities	Vinyl Windows, See Remarks
Parking	Stall

### **Interior**

Appliances	Dishwasher-Built-In, Dryer, Stove-Electric, Washer, Window Coverings, Refrigerators-Two
Heating	Forced Air-1, Natural Gas
Stories	3
Has Basement	Yes
Basement	Full, Finished

### **Exterior**

Exterior	Wood, Vinyl
Exterior Features	Corner Lot, Fenced, Playground Nearby, Schools, Shopping Nearby, See Remarks
Roof	Asphalt Shingles
Construction	Wood, Vinyl

Foundation Concrete Perimeter

### **School Information**

Elementary McLeod School  
Middle Steele Heights School  
High M. E. LaZerte School

### **Additional Information**

Date Listed August 27th, 2025  
Days on Market 19  
Zoning Zone 02  
Condo Fee \$355

DATA IS DEEMED RELIABLE BUT IS NOT GUARANTEED ACCURATE BY THE REALTORS® ASSOCIATION OF EDMONTON. COPYRIGHT 2025 BY THE REALTORS® ASSOCIATION OF EDMONTON. ALL RIGHTS RESERVED. Trademarks are owned or controlled by the Canadian Real Estate Association (CREA) and identify real estate professionals who are members of CREA (REALTOR®, REALTORS®) and/or the quality of services they provide (MLS®, Multiple Listing Service®)

Listing information last updated on September 15th, 2025 at 12:32am MDT