

\$239,900 - 18008 93 Avenue, Edmonton

MLS® #E4456283

\$239,900

3 Bedroom, 1.50 Bathroom, 1,147 sqft

Condo / Townhouse on 0.00 Acres

Belmead, Edmonton, AB

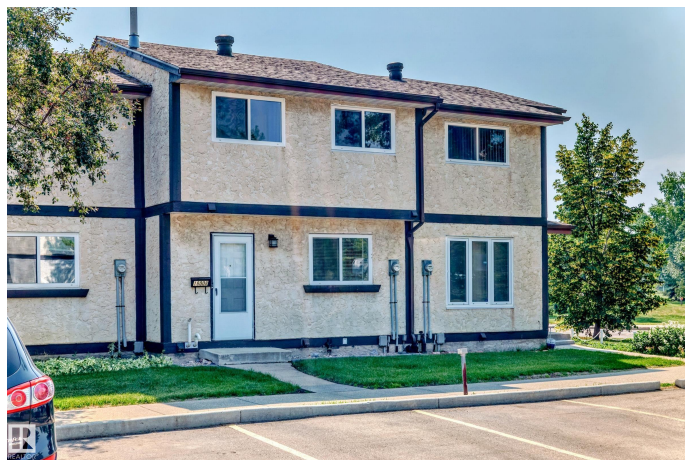
This stunning townhome w/ substantial renovations & in an amazing location is what you've been waiting for! Open the front door to modern hardwood flooring throughout the main floor. Stunning dream kitchen feat. modern cabinetry, granite counters, subway tiled backsplash, along w/ stainless steel appliances. The living room has a beautiful built in entertainment centre, & stylish wainscoting, plus has lots of natural light. A 2 pc bath complete the main floor. Upstairs features a 4 pc bathroom & 3 bedrooms including a primary bedroom w/ large walk in closet & beautiful feature wall. The basement is finished with an additional living space, lots of storages, & bright laundry area. But that's not all! The private fenced yard backing onto a walking path & across from schools, parks & playgrounds makes this location perfect! This home offers convenience to public transportation, & close proximity to WEM Mall. PLUS close to the upcoming Valley Line LRT, Anthony Henday & Whitemud. This is a MOVE IN READY condo!

Built in 1977

Essential Information

MLS® # E4456283

Price \$239,900



Bedrooms	3
Bathrooms	1.50
Full Baths	1
Half Baths	1
Square Footage	1,147
Acres	0.00
Year Built	1977
Type	Condo / Townhouse
Sub-Type	Townhouse
Style	2 Storey
Status	Active

Community Information

Address	18008 93 Avenue
Area	Edmonton
Subdivision	Belmead
City	Edmonton
County	ALBERTA
Province	AB
Postal Code	T5T 1Y1

Amenities

Amenities	No Animal Home, No Smoking Home, Parking-Plug-Ins, Parking-Visitor, Vinyl Windows, Wall Unit-Built-In
Parking	Stall

Interior

Appliances	Dishwasher-Built-In, Dryer, Microwave Hood Fan, Refrigerator, Stove-Electric, Washer, Window Coverings
Heating	Forced Air-1, Natural Gas
Stories	3
Has Basement	Yes
Basement	Full, Finished

Exterior

Exterior	Wood, Vinyl
Exterior Features	Fenced, Landscaped, Playground Nearby, Public Transportation, Schools, Shopping Nearby
Roof	Asphalt Shingles

Construction	Wood, Vinyl
Foundation	Concrete Perimeter

School Information

Elementary	Belmead
High	Jasper Place

Additional Information

Date Listed	September 5th, 2025
Zoning	Zone 20
Condo Fee	\$436

DATA IS DEEMED RELIABLE BUT IS NOT GUARANTEED ACCURATE BY THE REALTORS® ASSOCIATION OF EDMONTON. COPYRIGHT 2025 BY THE REALTORS® ASSOCIATION OF EDMONTON. ALL RIGHTS RESERVED.Trademarks are owned or controlled by the Canadian Real Estate Association (CREA) and identify real estate professionals who are members of CREA (REALTOR®, REALTORS®) and/or the quality of services they provide (MLS®, Multiple Listing Service®)

Listing information last updated on September 5th, 2025 at 3:32pm MDT