

\$700,000 - 5, 53104 Rge Rd 13, Rural Parkland County

MLS® #E4456877

\$700,000

4 Bedroom, 3.00 Bathroom, 1,646 sqft

Rural on 3.06 Acres

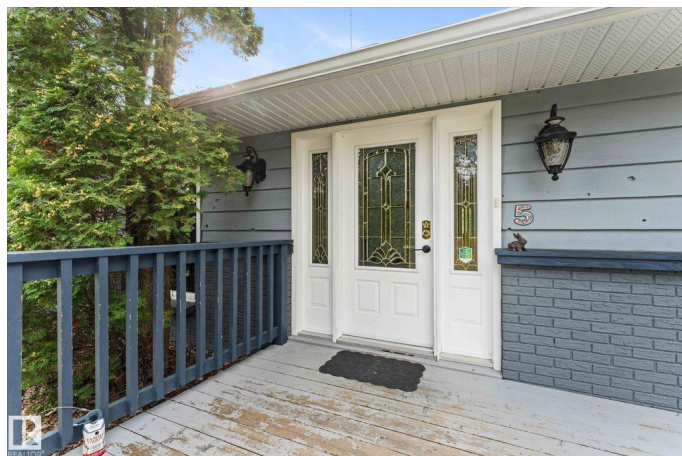
Hubbles Lake, Rural Parkland County, AB

Just 5 minutes from Stony Plain, this charming walkout bungalow sits on nearly 3 acres of rolling land with a private, treed backdrop. Set back from the road, this home offers a peaceful retreat with 4 bedrooms, a double attached garage, plus a single detached garage for extra storage or hobbies. Inside, youâ€™ll love the updated finishes, abundant natural light pouring through large windows, and a stunning wood-burning fireplace that creates a warm, inviting atmosphere. The walkout design adds functionality and easy access to the outdoors, where youâ€™ll find a true private oasis. Enjoy a greenhouse, gardens, and sweeping views of your very own countryside escape. Whether youâ€™re sipping coffee on the deck, tending to your plants, or cozying up by the fire, this property blends comfort, charm, and nature in perfect harmonyâ€”just minutes from town conveniences yet offering the serenity of acreage living.

Built in 1977

Essential Information

| | |
|-----------|-----------|
| MLS® # | E4456877 |
| Price | \$700,000 |
| Bedrooms | 4 |
| Bathrooms | 3.00 |



| | |
|----------------|------------------------|
| Full Baths | 3 |
| Square Footage | 1,646 |
| Acres | 3.06 |
| Year Built | 1977 |
| Type | Rural |
| Sub-Type | Detached Single Family |
| Style | Bungalow |
| Status | Active |

Community Information

| | |
|-------------|-----------------------|
| Address | 5, 53104 Rge Rd 13 |
| Area | Rural Parkland County |
| Subdivision | Hubbles Lake |
| City | Rural Parkland County |
| County | ALBERTA |
| Province | AB |
| Postal Code | T7Y 2T2 |

Amenities

| | |
|----------|---|
| Features | Air Conditioner, Deck, Detectors Smoke, Greenhouse, Hot Water Natural Gas, Walkout Basement |
|----------|---|

Interior

| | |
|-------------------|---------------------------|
| Interior Features | ensuite bathroom |
| Heating | Forced Air-1, Natural Gas |
| Fireplace | Yes |
| Stories | 2 |
| Has Basement | Yes |
| Basement | Full, Finished |

Exterior

| | |
|-------------------|--|
| Exterior | Wood |
| Exterior Features | Backs Onto Park/Trees, Fruit Trees/Shrubs, Hillside, Landscaped, Private Setting, Rolling Land, Sloping Lot, Treed Lot, Vegetable Garden |
| Construction | Wood |
| Foundation | Concrete Perimeter |

Additional Information

| | |
|-------------|---------------------|
| Date Listed | September 9th, 2025 |
|-------------|---------------------|

Days on Market 5

Zoning Zone 90

DATA IS DEEMED RELIABLE BUT IS NOT GUARANTEED ACCURATE BY THE REALTORS® ASSOCIATION OF EDMONTON. COPYRIGHT 2025 BY THE REALTORS® ASSOCIATION OF EDMONTON. ALL RIGHTS RESERVED. Trademarks are owned or controlled by the Canadian Real Estate Association (CREA) and identify real estate professionals who are members of CREA (REALTOR®, REALTORS®) and/or the quality of services they provide (MLS®, Multiple Listing Service®)

Listing information last updated on September 14th, 2025 at 12:32pm MDT