

\$398,900 - 124 Tribute Common, Spruce Grove

MLS® #E4456890

\$398,900

3 Bedroom, 3.50 Bathroom, 1,470 sqft
Single Family on 0.00 Acres

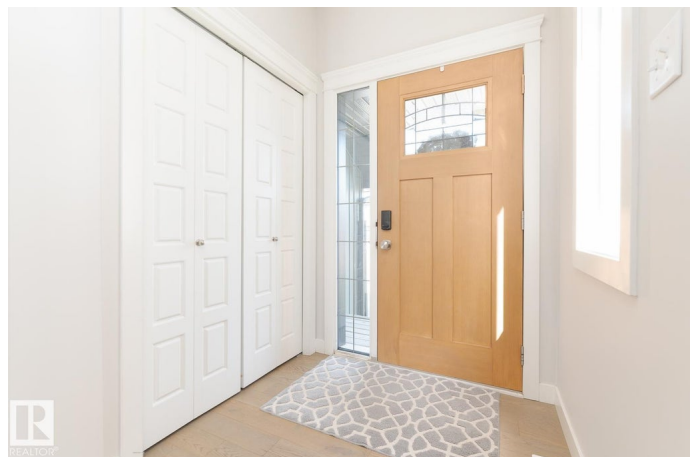
Tonewood, Spruce Grove, AB

Welcome to your next chapter in the heart of Tonewood—a vibrant, family-approved neighborhood with quick access to Jubilee Park, exciting upcoming amenities, and major commuter routes! This 1450+ sq ft half duplex offers a functional layout tailored for modern living. Step into a warm and inviting main floor featuring rich, stylish flooring that sets the tone for cozy evenings and lively gatherings. With 9 ft ceilings and an abundance of natural light, the space feels open and welcoming. The kitchen is a true highlight, boasting sleek stainless steel appliances and a seamless flow into the dining and living areas. A convenient 2-piece bath and single attached garage add everyday ease. Upstairs, enjoy a versatile bonus room and three spacious bedrooms, including a serene primary retreat with a walk-in closet and full ensuite. The basement includes a full bathroom and plenty of room for your future vision. Tucked into a quiet cul-de-sac, this home blends comfort, convenience, and community.

Built in 2017

Essential Information

MLS® #	E4456890
Price	\$398,900
Bedrooms	3



Bathrooms	3.50
Full Baths	3
Half Baths	1
Square Footage	1,470
Acres	0.00
Year Built	2017
Type	Single Family
Sub-Type	Half Duplex
Style	2 Storey
Status	Active

Community Information

Address	124 Tribute Common
Area	Spruce Grove
Subdivision	Tonewood
City	Spruce Grove
County	ALBERTA
Province	AB
Postal Code	T7X 0W6

Amenities

Amenities	Ceiling 9 ft., Deck
Parking Spaces	2
Parking	Single Garage Attached

Interior

Interior Features	ensuite bathroom
Appliances	Dishwasher-Built-In, Dryer, Garage Control, Garage Opener, Microwave Hood Fan, Refrigerator, Stove-Electric, Washer, Window Coverings
Heating	Forced Air-1, Natural Gas
Fireplace	Yes
Fireplaces	Tile Surround
Stories	2
Has Basement	Yes
Basement	Full, Unfinished

Exterior

Exterior	Wood, Vinyl
Exterior Features	Cul-De-Sac, No Back Lane, No Through Road, Partially Fenced

Roof	Asphalt Shingles
Construction	Wood, Vinyl
Foundation	Concrete Perimeter

Additional Information

Date Listed	September 9th, 2025
-------------	---------------------

Days on Market	8
----------------	---

Zoning	Zone 91
--------	---------

DATA IS DEEMED RELIABLE BUT IS NOT GUARANTEED ACCURATE BY THE REALTORS® ASSOCIATION OF EDMONTON. COPYRIGHT 2025 BY THE REALTORS® ASSOCIATION OF EDMONTON. ALL RIGHTS RESERVED. Trademarks are owned or controlled by the Canadian Real Estate Association (CREA) and identify real estate professionals who are members of CREA (REALTOR®, REALTORS®) and/or the quality of services they provide (MLS®, Multiple Listing Service®)

Listing information last updated on September 17th, 2025 at 2:32am MDT