

\$1,550,000 - 1110 50565 Rge Road 245, Rural Leduc County

MLS® #E4459418

\$1,550,000

5 Bedroom, 4.00 Bathroom, 2,669 sqft

Rural on 1.26 Acres

Lukas Estates, Rural Leduc County, AB

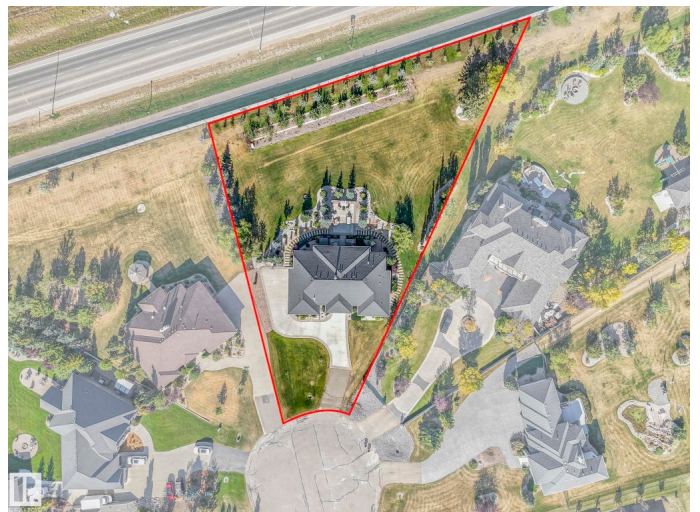
Acreage living with city services in Lukas Estates, just minutes to Beaumont or South Edmonton. Crown mouldings and timeless architectural details set the tone for this executive home over 5,600 sq ft of luxurious living with 5 beds ,5 baths. Designed for both comfort and elegance, this residence showcases soaring ceilings and an impressive floor plan that flows seamlessly throughout. The main floor is anchored by a top-of-the-line wood fireplace overlooking the gourmet kitchen with a chef's dream with a La Cornue stove, custom cabinetry, and a large island. Bonus prep space off the formal dining. The expansive main primary suite features gas fireplace, spa-inspired ensuite, and walk-in closet. Additional primary suite for flexible living. The basement includes a separate entrance, a custom wine cellar, 2 bathrooms, and a central gas fireplace, creating the perfect blend of style and functionality. Beautifully landscaped, complete with an irrigation system .Triple garage plus single garage.

Built in 2013

Essential Information

MLS® #

E4459418



Price	\$1,550,000
Bedrooms	5
Bathrooms	4.00
Full Baths	3
Half Baths	2
Square Footage	2,669
Acres	1.26
Year Built	2013
Type	Rural
Sub-Type	Detached Single Family
Style	Bungalow
Status	Active

Community Information

Address	1110 50565 Rge Road 245
Area	Rural Leduc County
Subdivision	Lukas Estates
City	Rural Leduc County
County	ALBERTA
Province	AB
Postal Code	T4X 0P5

Amenities

Features	Air Conditioner, Deck
----------	-----------------------

Interior

Interior Features	ensuite bathroom
Heating	Forced Air-2, Natural Gas
Stories	2
Has Basement	Yes
Basement	Full, Finished

Exterior

Exterior	Wood
Exterior Features	Backs Onto Park/Trees, Cul-De-Sac, Landscaped, Treed Lot
Construction	Wood
Foundation	Concrete Perimeter

Additional Information

Date Listed September 25th, 2025

Days on Market 1

Zoning Zone 80

DATA IS DEEMED RELIABLE BUT IS NOT GUARANTEED ACCURATE BY THE REALTORS® ASSOCIATION OF EDMONTON. COPYRIGHT 2025 BY THE REALTORS® ASSOCIATION OF EDMONTON. ALL RIGHTS RESERVED. Trademarks are owned or controlled by the Canadian Real Estate Association (CREA) and identify real estate professionals who are members of CREA (REALTOR®, REALTORS®) and/or the quality of services they provide (MLS®, Multiple Listing Service®)

Listing information last updated on September 26th, 2025 at 5:17pm MDT