

## \$542,000 - 301 71 Festival Way, Sherwood Park

MLS® #E4459430

**\$542,000**

2 Bedroom, 2.00 Bathroom, 1,006 sqft

Condo / Townhouse on 0.00 Acres

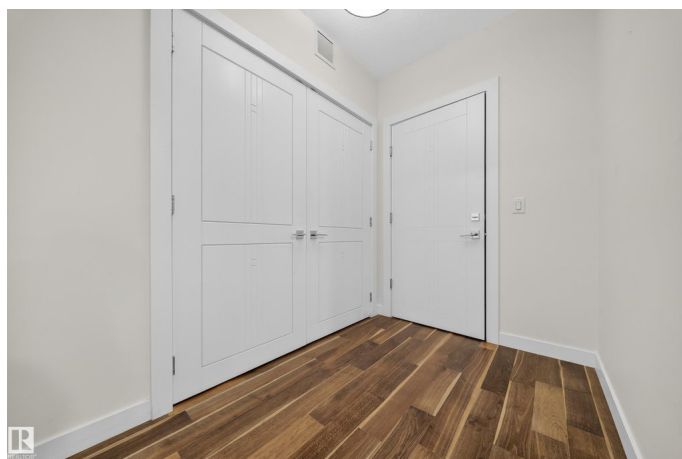
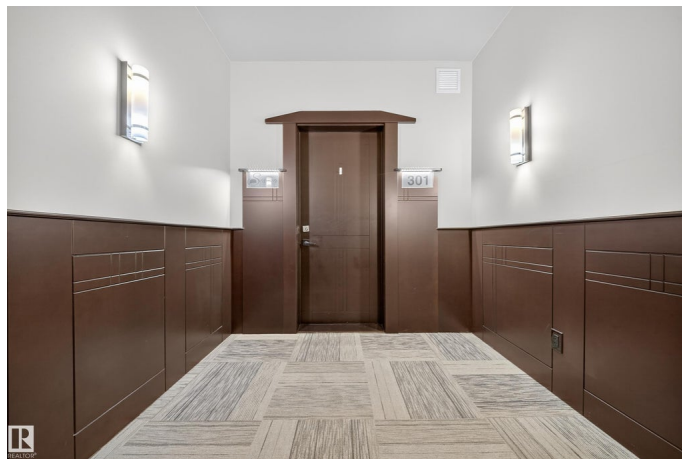
Centre In The Park, Sherwood Park, AB

Where luxury meets convenience! This stunning 2-bedroom, 2-bathroom condo offers over 1,000 sqft of modern living space. Featuring gorgeous hardwood floors throughout, the open-concept layout is flooded with natural light thanks to its south-facing exposure and large windows. This bright, airy unit provides the perfect backdrop for both everyday living and entertaining. With two spacious bedrooms and two well-appointed bathrooms, there's plenty of room to relax and unwind. Additional perks include two secure parking stalls, providing added convenience. Ideally located in a vibrant neighborhood, you'll have easy access to amenities, parks, and transit. Experience the exceptional craftsmanship and design that Salvi Homes is known for! Schedule your viewing today and make this exquisite condo your new home.

Built in 2019

### Essential Information

MLS® #	E4459430
Price	\$542,000
Bedrooms	2
Bathrooms	2.00
Full Baths	2
Square Footage	1,006



Acres	0.00
Year Built	2019
Type	Condo / Townhouse
Sub-Type	Lowrise Apartment
Style	Multi Level Apartment
Status	Active

### Community Information

Address	301 71 Festival Way
Area	Sherwood Park
Subdivision	Centre In The Park
City	Sherwood Park
County	ALBERTA
Province	AB
Postal Code	T8A 4Z1

### Amenities

Amenities	Air Conditioner, Detectors Smoke, Parking-Visitor, Party Room, Patio, Secured Parking, Sprinkler System-Fire, Storage-Locker Room, Natural Gas BBQ Hookup, 9 ft. Basement Ceiling, Rooftop Deck/Patio
Parking	Underground

### Interior

Interior Features	ensuite bathroom
Appliances	Dishwasher-Built-In, Dryer, Microwave Hood Fan, Refrigerator, Stove-Electric, Washer
Heating	Heat Pump, Geo Thermal
# of Stories	4
Stories	4
Has Basement	Yes
Basement	None, No Basement

### Exterior

Exterior	Wood, Composition
Exterior Features	Golf Nearby, Landscaped, Picnic Area, Playground Nearby, Public Transportation, Recreation Use, Schools, Shopping Nearby
Roof	Flat
Construction	Wood, Composition
Foundation	Concrete Perimeter

**Additional Information**

Date Listed	September 25th, 2025
Zoning	Zone 25
Condo Fee	\$568

DATA IS DEEMED RELIABLE BUT IS NOT GUARANTEED ACCURATE BY THE REALTORS® ASSOCIATION OF EDMONTON. COPYRIGHT 2025 BY THE REALTORS® ASSOCIATION OF EDMONTON. ALL RIGHTS RESERVED.Trademarks are owned or controlled by the Canadian Real Estate Association (CREA) and identify real estate professionals who are members of CREA (REALTOR®, REALTORS®) and/or the quality of services they provide (MLS®, Multiple Listing Service®)

Listing information last updated on September 25th, 2025 at 7:32pm MDT