

\$219,900 - 23 100 Westridge Crescent, Spruce Grove

MLS® #E4459491

\$219,900

3 Bedroom, 1.50 Bathroom, 1,166 sqft
Condo / Townhouse on 0.00 Acres

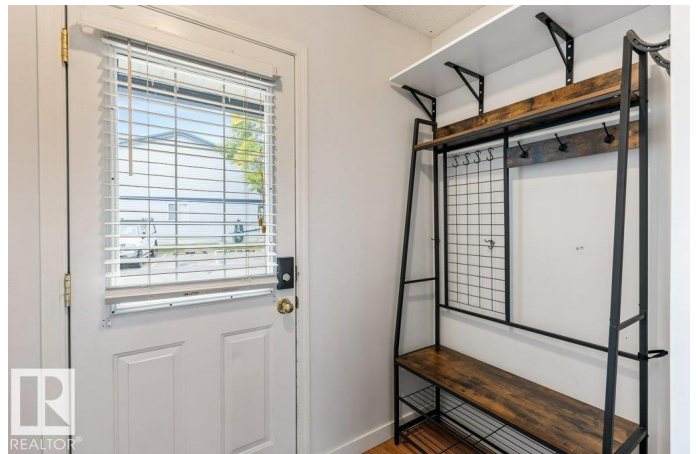
West Grove, Spruce Grove, AB

Welcome to this bright and spacious 1,066 sq.ft. end-unit townhouse in the heart of Spruce Grove! Featuring 3 bedrooms & 1.5 baths, this home is ideal for first-time buyers, downsizers, or investors. Step inside & you'll immediately notice the light, airy feel created by the neutral walls & natural light throughout. The kitchen is equipped with plenty of cabinetry. The dining area flows nicely into the generous living room, where you can relax while looking out to your private yard with a large deck and no neighbours directly behind or beside you. Upstairs, the primary bedroom offers great space and character with a custom wood closet front, complemented by 2 additional bedrooms and a full bathroom. The basement is partly finished with a rec room, newer laundry & hot water tank—and with a little work on the ceiling, it's ready to be completed to your liking. With 2 parking stalls, low condo fees, an unbeatable central location, this property offers fantastic value.

Built in 1981

Essential Information

MLS® #	E4459491
Price	\$219,900
Bedrooms	3



Bathrooms	1.50
Full Baths	1
Half Baths	1
Square Footage	1,166
Acres	0.00
Year Built	1981
Type	Condo / Townhouse
Sub-Type	Townhouse
Style	2 Storey
Status	Active

Community Information

Address	23 100 Westridge Crescent
Area	Spruce Grove
Subdivision	West Grove
City	Spruce Grove
County	ALBERTA
Province	AB
Postal Code	T7X 1R7

Amenities

Amenities	Deck, Parking-Extra, Storage-In-Suite
Parking	2 Outdoor Stalls

Interior

Appliances	Dishwasher-Built-In, Dryer, Hood Fan, Oven-Microwave, Refrigerator, Stove-Electric, Washer, Window Coverings
Heating	Forced Air-1, Natural Gas
Stories	3
Has Basement	Yes
Basement	Full, Partially Finished

Exterior

Exterior	Wood, Vinyl
Exterior Features	Fenced, Flat Site, Playground Nearby, Public Transportation, Schools, Shopping Nearby
Roof	Asphalt Shingles
Construction	Wood, Vinyl
Foundation	Concrete Perimeter

Additional Information

Date Listed	September 25th, 2025
Zoning	Zone 91
Condo Fee	\$342

DATA IS DEEMED RELIABLE BUT IS NOT GUARANTEED ACCURATE BY THE REALTORS® ASSOCIATION OF EDMONTON. COPYRIGHT 2025 BY THE REALTORS® ASSOCIATION OF EDMONTON. ALL RIGHTS RESERVED.Trademarks are owned or controlled by the Canadian Real Estate Association (CREA) and identify real estate professionals who are members of CREA (REALTOR®, REALTORS®) and/or the quality of services they provide (MLS®, Multiple Listing Service®)

Listing information last updated on September 25th, 2025 at 6:02pm MDT