

\$1,199,999 - 14717 88 Avenue, Edmonton

MLS® #E4459735

\$1,199,999

5 Bedroom, 4.50 Bathroom, 2,652 sqft

Single Family on 0.00 Acres

Parkview, Edmonton, AB

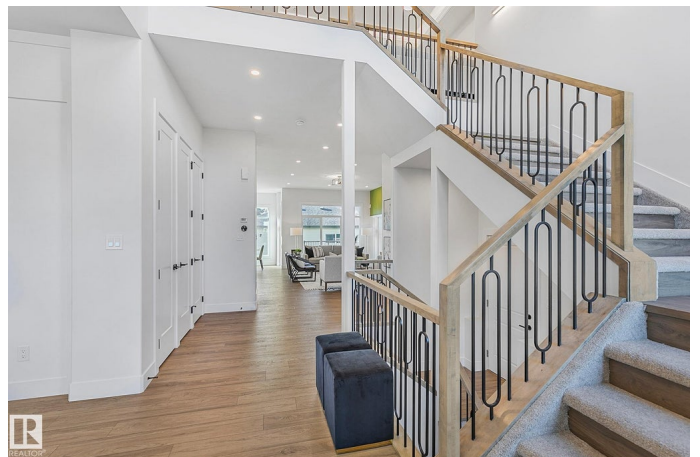
This brand new custom built (NOT A SKINNY) turn-key home in Parkview will leave you breathless! No detail has been overlooked! With 3+2 beds, 4.5 baths and 3900+ sqft of developed living space this Green Built home is finished to the highest quality both inside & out! Insulated TRIPLE GARAGE, LANDSCAPED, appliance allowance, security system, HARDIE siding, deck, rough in EV charger, gas line to BBQ , FINISHED BASEMENTâ€"wow! Stunning, triple glazed strategically placed windows fill the home with light while flanking the open concept living space anchored by a gas fireplace & custom wall details. Walk through butlerâ€™s pantry/wine/coffee bar & open to above staircase will leave you breathless! A luxurious primary suite is a private oasis noting a spa-inspired ensuite boasting dual vanities, walk in shower and soaker tub! BONUS ROOM & upper bedrooms each with ensuite & walk in closet! Upper laundry! Beautifully DEVELOPED BASEMENT notes WET BAR! Sophisticated, elegant, convenient & functional! Welcome Home!

Built in 2025

Essential Information

MLS® # E4459735

Price \$1,199,999



Bedrooms	5
Bathrooms	4.50
Full Baths	4
Half Baths	1
Square Footage	2,652
Acres	0.00
Year Built	2025
Type	Single Family
Sub-Type	Detached Single Family
Style	2 Storey
Status	Active

Community Information

Address	14717 88 Avenue
Area	Edmonton
Subdivision	Parkview
City	Edmonton
County	ALBERTA
Province	AB
Postal Code	T5R 4J9

Amenities

Amenities	Bar, Ceiling 10 ft., Ceiling 9 ft., Closet Organizers, Deck, Detectors Smoke, Hot Water Natural Gas, No Animal Home, No Smoking Home, Smart/Program. Thermostat, Vaulted Ceiling, Vinyl Windows, Wet Bar, Green Building, Vacuum System-Roughed-In, HRV System, Natural Gas BBQ Hookup, Natural Gas Stove Hookup, 9 ft. Basement Ceiling
Parking	Insulated, Triple Garage Detached

Interior

Interior Features	ensuite bathroom
Appliances	Alarm/Security System, Garage Control, Garage Opener, See Remarks, Builder Appliance Credit
Heating	Forced Air-2, Natural Gas
Fireplace	Yes
Fireplaces	Tile Surround
Stories	3
Has Basement	Yes
Basement	Full, Finished

Exterior

Exterior	Wood, Stone, Hardie Board Siding
Exterior Features	Back Lane, Landscaped, Playground Nearby, Public Transportation, Schools, Shopping Nearby, Partially Fenced
Roof	Asphalt Shingles
Construction	Wood, Stone, Hardie Board Siding
Foundation	Concrete Perimeter

School Information

Elementary	Rio/Pat Heights
Middle	St Rose/Laurier
High	FX/JP

Additional Information

Date Listed	September 26th, 2025
Days on Market	2
Zoning	Zone 10

DATA IS DEEMED RELIABLE BUT IS NOT GUARANTEED ACCURATE BY THE REALTORS® ASSOCIATION OF EDMONTON. COPYRIGHT 2025 BY THE REALTORS® ASSOCIATION OF EDMONTON. ALL RIGHTS RESERVED.Trademarks are owned or controlled by the Canadian Real Estate Association (CREA) and identify real estate professionals who are members of CREA (REALTOR®, REALTORS®) and/or the quality of services they provide (MLS®, Multiple Listing Service®)

Listing information last updated on September 28th, 2025 at 5:02pm MDT